

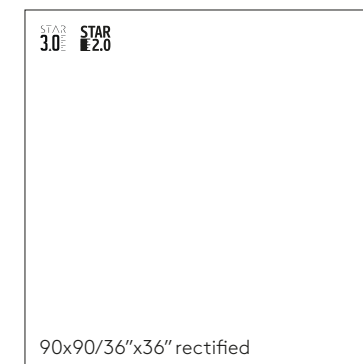
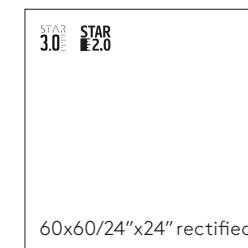
peacock collection

60x60/24"x24" • 90x90/36"x36"



PEI
IV

R11






black 60x60x3/24"x24"x1,20" • 60x60x2/24"x24"x0,80" rectified

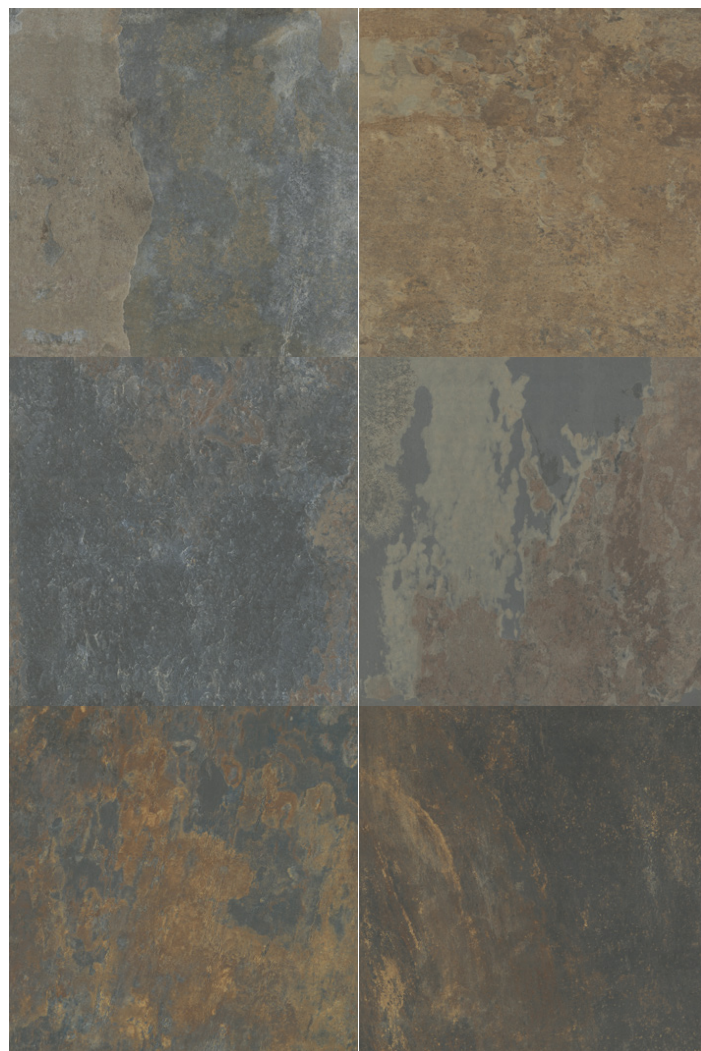
black 90x90x3/36"x36"x1,20" rectified

color	format cm/in	thk. mm/in	ean code	surface	no. of faces	anti-slip	pei	rectified
black	90x90/36"x36"	30/1,20"	5901503221242	mat	13	R11	IV	✓
	90x90/36"x36"	20/0,80"	5905427710004	mat	13	R11	IV	✓
	60x60/24"x24"	30/1,20"	5901503223802	mat	13	R11	IV	✓
	60x60/24"x24"	20/0,80"	5901503220009	mat	13	R11	IV	✓

	format cm/in	thk. mm/in	pcs./box	m ² /sq ft box	kg/lb box	box/pallet	m ² /sq ft pallet	kg/lb pallet
	90x90/36"x36"	30/1,20"	1	0,81/8,72	56/123,46	20	16,2/174,40	1120/2469
	90x90/36"x36"	20/0,80"	1	0,81/8,72	35,2/77,20	30	24,3/261,56	1080/2380
	60x60/24"x24"	30/1,20"	1	0,36/3,87	25/55,12	40	14,40/154,99	1000/2205
	60x60/24"x24"	20/0,80"	2	0,72/7,75	31/68,34	30	21,60/232,50	930/2050



peacock black 90x90x3/36"x36"x1,20" /rectified/



rusty 60x60x3/24"x24"x1,20" • 60x60x2/24"x24"x0,80" rectified




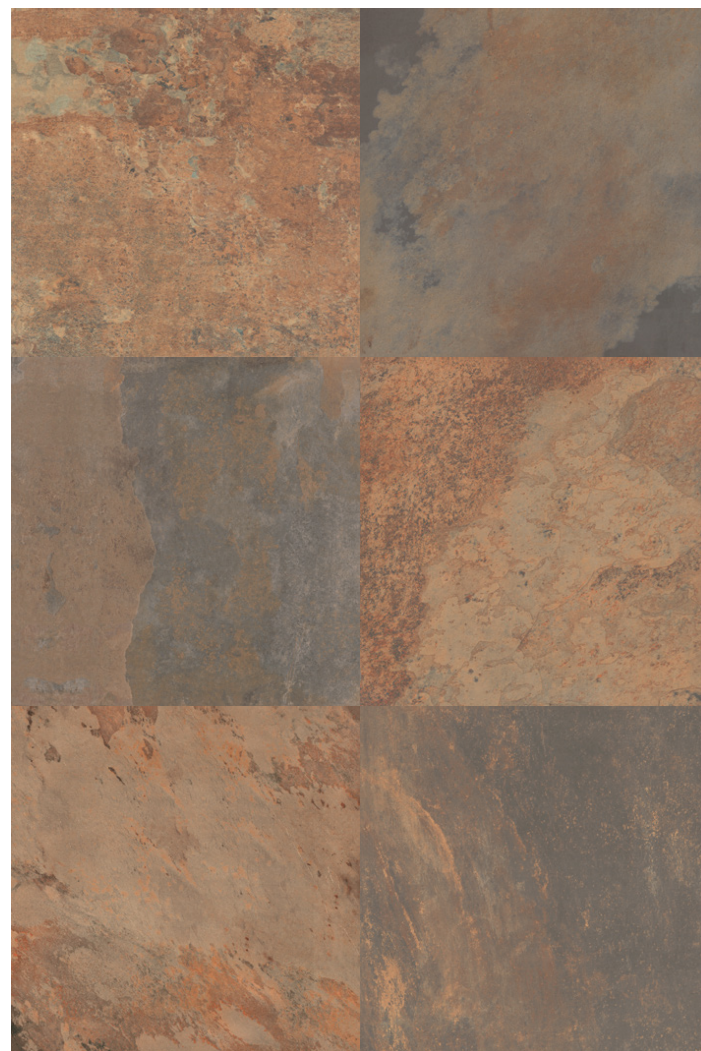
rusty 90x90x3/36"x36"x1,20" rectified



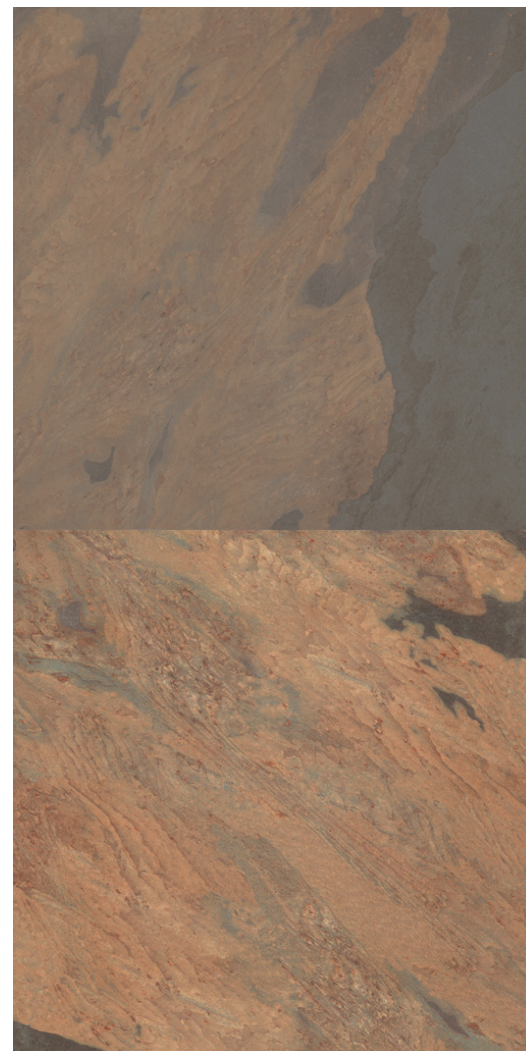
peacock rusty 90x90x3/36"x36"x1,20" /rectified/

color	format cm/in	thk. mm/in	ean code	surface	no. of faces	anti-slip	pei	rectified
rusty	90x90/36"x36"	30/1,20"	5901503221228	mat	17	R11	IV	✓
	90x90/36"x36"	20/0,80"	5905427710066	mat	17	R11	IV	✓
	60x60/24"x24"	30/1,20"	5901503223826	mat	17	R11	IV	✓
	60x60/24"x24"	20/0,80"	5901503220023	mat	17	R11	IV	✓

	format cm/in	thk. mm/in	pcs./box	m ² /sq ft box	kg/lb box	box/pallet	m ² /sq ft pallet	kg/lb pallet
24	90x90/36"x36"	30/1,20"	1	0,81/8,72	56/123,46	20	16,2/174,40	1120/2469
	90x90/36"x36"	20/0,80"	1	0,81/8,72	35,2/77,20	30	24,3/261,56	1080/2380
	60x60/24"x24"	30/1,20"	1	0,36/3,87	25/55,12	40	14,40/154,99	1000/2205
	60x60/24"x24"	20/0,80"	2	0,72/7,75	31/68,34	30	21,60/232,50	930/2050



copper 60x60x3/24"x24"x1,20" • 60x60x2/24"x24"x0,80" rectified




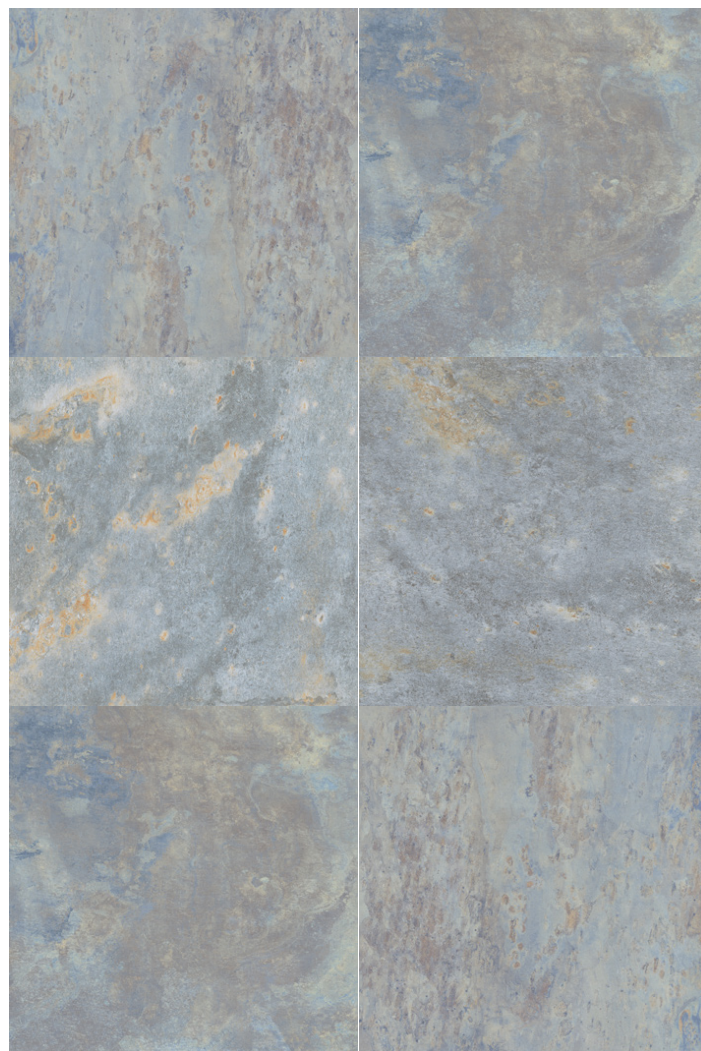
copper 90x90x3/36"x36"x1,20" rectified



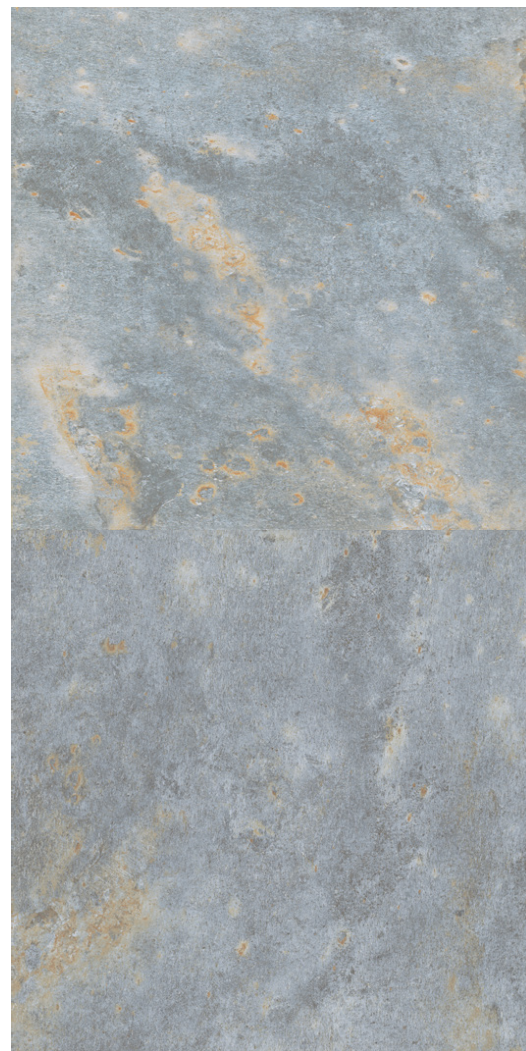
peacock copper 90x90x3/36"x36"x1,20" /rectified/

color	format cm/in	thk. mm/in	ean code	surface	no. of faces	anti-slip	pei	rectified
copper	90x90/36"x36"	30/1,20"	5901503218280	mat	19	R11	IV	✓
	90x90/36"x36"	20/0,80"	5905427710042	mat	19	R11	IV	✓
	60x60/24"x24"	30/1,20"	5901503223840	mat	19	R11	IV	✓
	60x60/24"x24"	20/0,80"	5901503220047	mat	19	R11	IV	✓

	format cm/in	thk. mm/in	pcs./box	m ² /sq ft box	kg/lb box	box/pallet	m ² /sq ft pallet	kg/lb pallet
	90x90/36"x36"	30/1,20"	1	0,81/8,72	56/123,46	20	16,2/174,40	1120/2469
	90x90/36"x36"	20/0,80"	1	0,81/8,72	35,2/77,20	30	24,3/261,56	1080/2380
	60x60/24"x24"	30/1,20"	1	0,36/3,87	25/55,12	40	14,40/154,99	1000/2205
	60x60/24"x24"	20/0,80"	2	0,72/7,75	31/68,34	30	21,60/232,50	930/2050



blue 60x60x3/24"x24"x1,20" • 60x60x2/24"x24"x0,80" rectified




blue 90x90x3/36"x36"x1,20" rectified



peacock blue 90x90x3/36"x36"x1,20" /rectified/

color	format cm/in	thk. mm/in	ean code	surface	no. of faces	anti-slip	pei	rectified
blue	90x90/36"x36"	30/1,20"	5901503221204	mat	4	R11	IV	✓
	90x90/36"x36"	20/0,80"	5905427710028	mat	4	R11	IV	✓
	60x60/24"x24"	30/1,20"	5901503223864	mat	4	R11	IV	✓
	60x60/24"x24"	20/0,80"	5901503220061	mat	4	R11	IV	✓


	format cm/in	thk. mm/in	pcs./box	m ² /sq ft box	kg/lb box	box/pallet	m ² /sq ft pallet	kg/lb pallet
	90x90/36"x36"	30/1,20"	1	0,81/8,72	56/123,46	20	16,2/174,40	1120/2469
	90x90/36"x36"	20/0,80"	1	0,81/8,72	35,2/77,20	30	24,3/261,56	1080/2380
	60x60/24"x24"	30/1,20"	1	0,36/3,87	25/55,12	40	14,40/154,99	1000/2205
	60x60/24"x24"	20/0,80"	2	0,72/7,75	31/68,34	30	21,60/232,50	930/2050



sand 60x60x3/24"x24"x1,20" • 60x60x2/24"x24"x0,80" rectified

sand 90x90x3/36"x36"x1,20" rectified

color	format cm/in	thk. mm/in	ean code	surface	no. of faces	anti-slip	pei	rectified
sand	90x90/36"x36"	30/1,20"	5901503223789	mat	15	R11	IV	✓
	90x90/36"x36"	20/0,80"	5905427710080	mat	15	R11	IV	✓
	60x60/24"x24"	30/1,20"	5901503221723	mat	15	R11	IV	✓
	60x60/24"x24"	20/0,80"	5901503220085	mat	15	R11	IV	✓

	format cm/in	thk. mm/in	pcs./box	m ² /sq ft box	kg/lb box	box/pallet	m ² /sq ft pallet	kg/lb pallet
30	90x90/36"x36"	30/1,20"	1	0,81/8,72	56/123,46	20	16,2/174,40	1120/2469
	90x90/36"x36"	20/0,80"	1	0,81/8,72	35,2/77,20	30	24,3/261,56	1080/2380
	60x60/24"x24"	30/1,20"	1	0,36/3,87	25/55,12	40	14,40/154,99	1000/2205
	60x60/24"x24"	20/0,80"	2	0,72/7,75	31/68,34	30	21,60/232,50	930/2050



peacock sand 90x90x3/36"x36"x1,20" /rectified/