

Frozen

White body wall tiles



FROZEN | FROZEN-W_40*120/R FROZEN PRISM_40*120/R ASPEN
SMOKE_19,5*121,5/A/R



FROZEN | TYCHO-W/R FROZEN-W_90/R SHARK-S_90,7*90,7/L/R



FROZEN | FROZEN-W MOSAIC



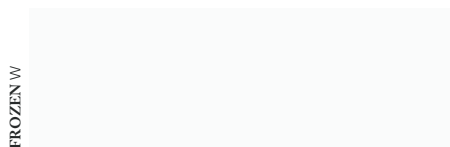
FROZEN | FROZEN-W LINED ESSENCE NUT_15*90/R

Frozen

White body wall tiles

40 * 120 cm
15 3/4 * 47 1/4"

33,3 * 100 cm
13 1/8 * 39 3/8"



FROZEN



40 * 120 * 0,7 cm | 15 3/4 * 47 1/4 * 1/4"

RECTIFIED	NATURAL
W	BN101
	23375

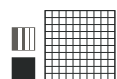
FROZEN PRISM



40 * 120 * 0,85 cm | 15 3/4 * 47 1/4 * 1/4"

RECTIFIED	NATURAL
FROZEN PRISM	BN102
	23376

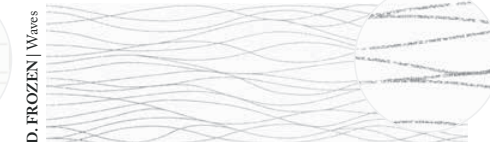
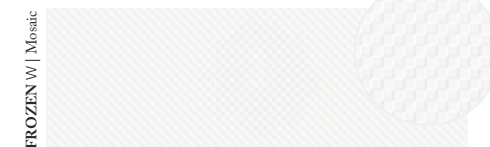
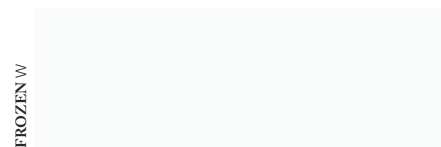
D. WHITE MIX MOSAIC



Pure Frozen

30 * 30 cm | 11 3/16 * 11 3/16"

NO RECTIFIED	NATURAL
D. WHITE MIX MOSAIC	P44
	22615



FROZEN



33,3 * 100 * 0,7 cm
13 1/8 * 39 3/8 * 1/4"

RECTIFIED	NATURAL
W	BN65
	20585



15,5 * 100 * 0,7 cm
6 1/8 * 39 3/8 * 1/4"

RECTIFIED	NATURAL
W	BN105
	23825



8 * 33,3 * 0,7 cm
3 1/8 * 13 1/8 * 1/4"

RECTIFIED	NATURAL
W	BN106
	23826

FROZEN MOSAIC



33,3 * 100 * 0,7 cm | 13 1/8 * 39 3/8 * 1/4"

RECTIFIED	NATURAL
W	BN66
	21372

FROZEN LINED



33,3 * 100 * 0,7 cm | 13 1/8 * 39 3/8 * 1/4"

RECTIFIED	NATURAL
W	BN66
	22305

* D. FROZEN WAVES



33,3 * 100 * 0,7 cm | 13 1/8 * 39 3/8 * 1/4"

RECTIFIED	NATURAL
D. FROZEN WAVES	P85
	22333

CARACTERÍSTICAS TÉCNICAS TECHNICAL CHARACTERISTICS			
joint	wall tiles	gloss	thickness

EMBALAJE PACKING									
Formato Sizes		Cajas Boxes			Pallet			Cont./20'	Cont./20'
cm	Piezas	m ² /sq.m	kg	Cajas	m ² /sq.m	kg	Tamaño cm aprox.	m ² /sq.m	m ² /sq.m
40 * 120 * 0,7	5	2,36	27,50	21	49,56	601,50	120 * 80 * 54	1771,47	1977,46
40 * 120 * 0,85	4	1,89	25,68	20	37,80	537,60	120 * 80 * 54	1511,72	1687,50
15 3/4 * 47 1/4 * 1/4	5	25,40	60,50	21	533,46	1323,30	47 1/4 * 31 1/2 * 21 1/4	19067,94	21285,14
15 3/4 * 47 1/4 * 1/4	4	20,34	56,50	20	406,88	1182,72	47 1/4 * 31 1/2 * 21 1/4	16271,99	18164,08

CARACTERÍSTICAS TÉCNICAS TECHNICAL CHARACTERISTICS			
joint	wall tiles	gloss	thickness

EMBALAJE PACKING									
Formato Sizes		Cajas Boxes			Pallet			Cont./20'	Cont./20'
cm	Piezas	m ² /sq.m	kg	Cajas	m ² /sq.m	kg	Tamaño cm aprox.	m ² /sq.m	m ² /sq.m
33,3 * 100 * 0,7	6	2	26,6	24	48	663,4	118 * 105 * 48	1556	1737
13 1/8 * 39 3/8 * 1/4	6	21,51	58,52	24	516,66	1462,5	46 7/16 * 41 5/16 * 19 3/8	16748,64	18696,91

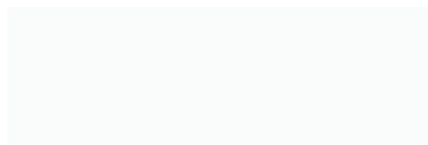
* No se aconseja su uso en zonas con presencia de vapor. Not suitable for environments where water vapour is present.

Frozen

White body wall tiles

32 * 90 cm
12 5/8 * 35 7/16"

FROZEN W



FROZEN



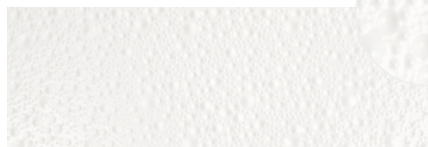
32 * 90 * 1,05 cm | 12 5/8 * 35 7/16 * 3/16"

RECTIFIED	NATURAL REG. CODE BN29
W	17393

33 * 91 * 1,05 cm | 13 * 35 13/16 * 3/16"

NO RECTIFIED	NATURAL REG. CODE BN21
W	17131

TYCHO W



TYCHO



32 * 90 * 1,05 cm | 12 5/8 * 35 7/16 * 3/16"

RECTIFIED	NATURAL REG. CODE BN36
W	19868

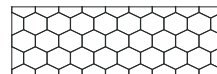
33 * 91 * 1,05 cm | 13 * 35 13/16 * 3/16"

NO RECTIFIED	NATURAL REG. CODE BN25
W	19397

LOSKA GREY



LOSKA

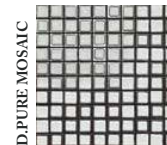


32 * 90 * 1,05 cm | 12 5/8 * 35 7/16 * 3/16"

RECTIFIED	NATURAL REG. CODE BN36
GREY	17471

33 * 91 * 1,05 cm | 13 * 35 13/16 * 3/16"

NO RECTIFIED	NATURAL REG. CODE BN25
GREY	17470



D. PURE MOSAIC

30 * 30 cm | 11 13/16 * 11 13/16"

NATURAL REG. CODE P64
22332



D. NUKA-H



D. NUKA-G



D. TIMELESS



D. PLAYFUL

30 * 30 cm | 11 13/16 * 11 13/16"

NO RECTIFIED	NATURAL REG. CODE P50
D. NUKA-H	19248
D. NUKA-G	20296
D. TIMELESS	19249
D. PLAYFUL	19250



20347 L. IRON ANTHRACITE _ 1,5 * 90 cm | 3/16 * 3 3/16" _ P38



20348 L. IRON MOCCHA _ 1,5 * 90 cm | 3/16 * 3 3/16" _ P38



07021 ACERO/90 _ 1,5 * 90 cm | 3/16 * 3 3/16" _ P30



17317 L. NORIAN-N/90R _ 0,8 * 90 cm | 3/16 * 3 3/16" _ P32



22303 ALUMINIO/100/MAT _ 100 * 0,5 cm | 39 3/8" * 3/16" _ P42

CARACTERÍSTICAS TÉCNICAS TECHNICAL CHARACTERISTICS		
joint	wall tiles	gloss

EMBALAJE PACKING									
Formato Sizes	Cajas Boxes			Pallet			Cont./20' 21500 kg.	Cont./20' 24000 kg.	
	Piezas	m ² /sq.m	kg	Cajas	m ² /sq.m	kg			Tamaño cm aprox.
32 * 90 * 1,05	4	1,15	20,90	56	64,51	1195,40	120 * 80 * 105	1160,29	1295,20
33 * 91 * 1,05	4	1,20	21,80	51	61,26	1136,80	120 * 80 * 106	1158,62	1293,34
inch	Units	ft ²	lb	Boxes	ft ²	lb	Sizes inch approx.	ft ²	ft ²
12 5/8 * 35 7/16 * 3/16	4	12,40	45,98	56	694,40	2629,88	47 1/8 * 31 1/2 * 41 5/16	12489,22	13941,46
13 * 35 13/16 * 3/16	4	12,93	47,96	51	659,41	2500,96	47 1/4 * 31 1/2 * 41 3/4	12471,24	13921,38