



FLOOR: Farge **RR 05** 1200x1200 / 48"x48" NAT RECT
WALL: Farge **RR 05** 1200x2780 / 48"x110" NAT RECT
FURNITURE: BATHMOOD Joy Farge **RR 05**

NORR

Essential colour range with a sophisticated appearance, for a NORDIC INSPIRED design.

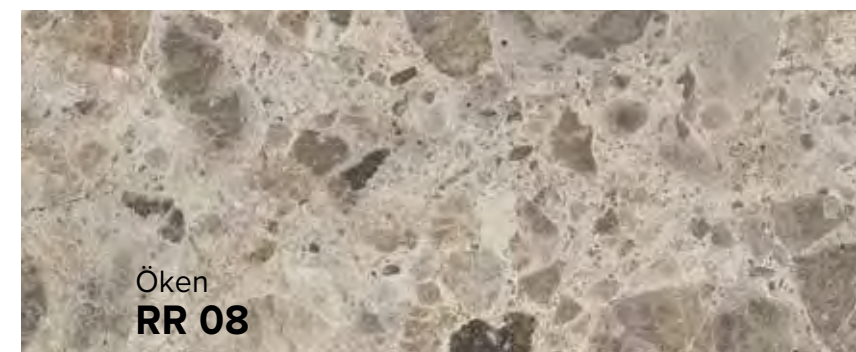
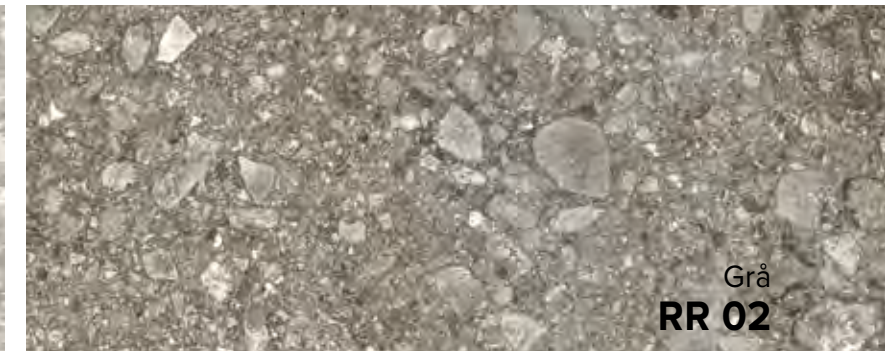
Norr is a collection marked by a harmoniously irregular grain, where pebbles with different colours and sizes create attractive three-dimensional effects.



OUTDOOR FLOOR: Hav **RR 06** 800x800 / 31½"x31½" ST RECT EVO_2/E" 20 mm

COLORI

Colours | Farben | Couleurs | Colores | Цветов | 种颜色



FLOOR Grå **RR 02** 600x1200 / 24"x48" NAT RECT
WALL Grå **RR 02** 1200x2780 / 48"x110" NAT RECT
WORKTOPS and WASHBASIN Grå **RR 02** NAT



FLOOR: Grus **RR 09** 800x800 / 31½"x31½" NAT RECT
WALL: Grus **RR 09** 1200x2780 / 48"x110" NAT RECT
COUNTER: Grus **RR 09** NAT



FLOOR Farge **RR 05** 1200x1200 / 48"x48" NAT RECT
WALL: Farge **RR 05** 1200x2780 / 48"x110" NAT RECT
BENCHS and FLOWER BOXES: Farge **RR 05** NAT

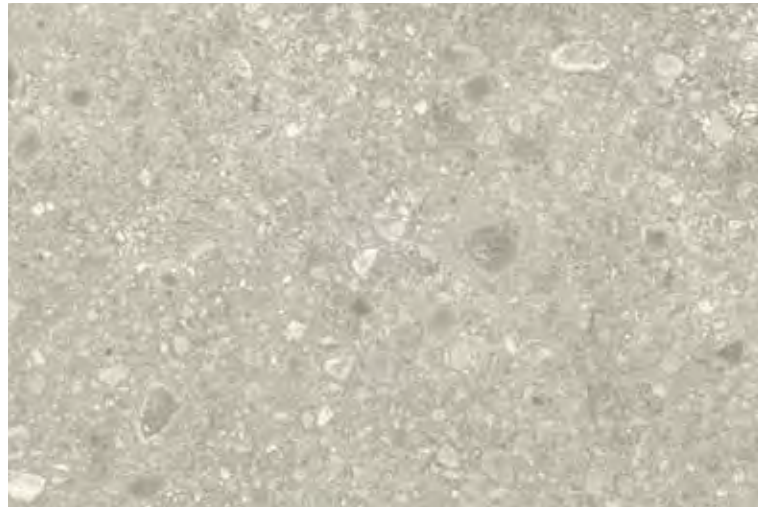


FLOOR: Öken **RR 08** 1200x1200 / 48"x48" NAT RECT
WALL: Öken **RR 08** 1200x2780 / 48"x110" NAT RECT

COLORI

Colours | Farben | Couleurs | Colores | Цветов | 种颜色

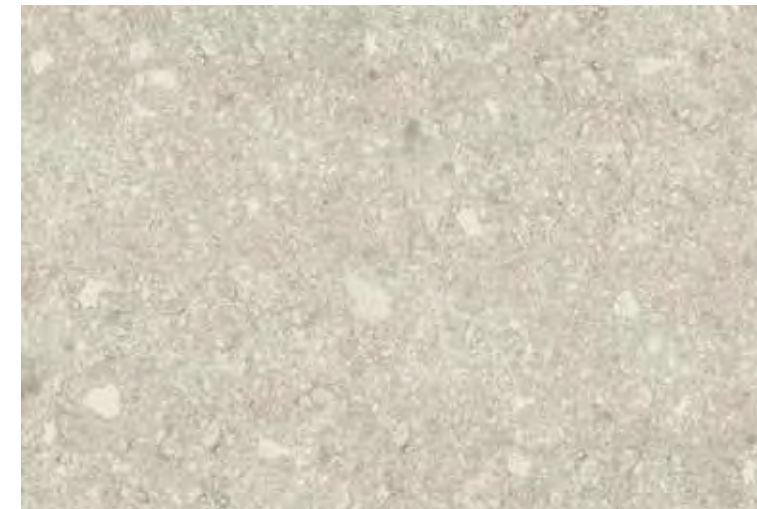
VIT RR 01



Formati Nominali Nominal Sizes	Superficie Finish	Spessore mm Thickness mm
150x600 / 6"x24"	NAT RECT	9
300x600 / 12"x24"	NAT RECT	9
600x600 / 24"x24"	NAT / ST RECT	9
800x800 / 31½"x31½"	NAT RECT	9
600x1200 / 24"x48"	NAT RECT	9
1200x1200 / 48"x48"	NAT RECT	9
600x600 / 24"x24"	ST RECT	20
800x800 / 31½"x31½"	ST RECT	20
1200x1200 / 48"x48"	ST RECT	20

Stucchi consigliati Recommended grouts		
KERAKOLL	06	
MAPEI	110 Manhattan 2000	
LATICRETE	88 Silver Shadow	

MELK RR 04



Formati Nominali Nominal Sizes	Superficie Finish	Spessore mm Thickness mm
150x600 / 6"x24"	NAT RECT	9
300x600 / 12"x24"	NAT RECT	9
600x600 / 24"x24"	NAT / ST RECT	9
800x800 / 31½"x31½"	NAT RECT	9
600x1200 / 24"x48"	NAT RECT	9
1200x1200 / 48"x48"	NAT RECT	9

Stucchi consigliati Recommended grouts		
KERAKOLL	20	
MAPEI	111 Grigio Argento	
LATICRETE	88 Silver Shadow	

GRÅ RR 02



Formati Nominali Nominal Sizes	Superficie Finish	Spessore mm Thickness mm
150x600 / 6"x24"	NAT RECT	9
300x600 / 12"x24"	NAT RECT	9
600x600 / 24"x24"	NAT / ST RECT	9
800x800 / 31½"x31½"	NAT RECT	9
600x1200 / 24"x48"	NAT RECT	9
1200x1200 / 48"x48"	NAT RECT	9
1200x1200 / 48"x48"	NAT RECT	6
1200x2780 / 48"x110"	NAT RECT	6
1600x1600 / 63"x63"	NAT RECT	6
1600x3200 / 63"x126"	NAT RECT	6
1620x3240 / 63¾"x127½"	SP NOT RECT	12
600x600 / 24"x24"	ST RECT	20
800x800 / 31½"x31½"	ST RECT	20
1200x1200 / 48"x48"	ST RECT	20

Stucchi consigliati Recommended grouts		
KERAKOLL	08	
MAPEI	112 Grigio Medio	
LATICRETE	78 Sterling Silver	

FARGE RR 05



Formati Nominali Nominal Sizes	Superficie Finish	Spessore mm Thickness mm
150x600 / 6"x24"	NAT RECT	9
300x600 / 12"x24"	NAT RECT	9
600x600 / 24"x24"	NAT / ST RECT	9
800x800 / 31½"x31½"	NAT RECT	9
600x1200 / 24"x48"	NAT RECT	9
1200x1200 / 48"x48"	NAT RECT	9
1200x1200 / 48"x48"	NAT RECT	6
1200x2780 / 48"x110"	NAT RECT	6
600x600 / 24"x24"	ST RECT	20
800x800 / 31½"x31½"	ST RECT	20
1200x1200 / 48"x48"	ST RECT	20

Stucchi consigliati Recommended grouts		
KERAKOLL	08	
MAPEI	113 Grigio Cemento	
LATICRETE	78 Sterling Silver	

SVART RR 03



Formati Nominali Nominal Sizes	Superficie Finish	Spessore mm Thickness mm
150x600 / 6"x24"	NAT RECT	9
300x600 / 12"x24"	NAT RECT	9
600x600 / 24"x24"	NAT / ST RECT	9
800x800 / 31½"x31½"	NAT RECT	9
600x1200 / 24"x48"	NAT RECT	9
1200x1200 / 48"x48"	NAT RECT	9
600x600 / 24"x24"	ST RECT	20
800x800 / 31½"x31½"	ST RECT	20
1200x1200 / 48"x48"	ST RECT	20

Stucchi consigliati Recommended grouts		
KERAKOLL	11	
MAPEI	114 Antracite	
LATICRETE	45 Raven	

HAV RR 06



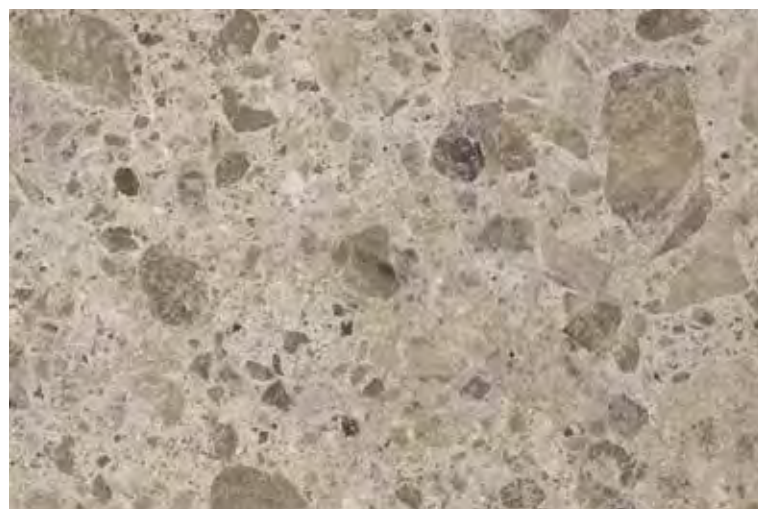
Formati Nominali Nominal Sizes	Superficie Finish	Spessore mm Thickness mm
150x600 / 6"x24"	NAT RECT	9
300x600 / 12"x24"	NAT RECT	9
600x600 / 24"x24"	NAT / ST RECT	9
800x800 / 31½"x31½"	NAT RECT	9
600x1200 / 24"x48"	NAT RECT	9
1200x1200 / 48"x48"	NAT RECT	9
1200x2780 / 48"x110"	NAT RECT	6
600x600 / 24"x24"	ST RECT	20
800x800 / 31½"x31½"	ST RECT	20

Stucchi consigliati Recommended grouts		
KERAKOLL	07	
MAPEI	111 Grigio Argento	
LATICRETE	89 Smoke Grey	

COLORI

Colours | Farben | Couleurs | Colores | Цветов | 种颜色

ÖKEN RR 08



Formati Nominali Nominal Sizes	Superficie Finish	Spessore mm Thickness mm
150x600 / 6"x24"	NAT RECT	9
300x600 / 12"x24"	NAT RECT	9
600x600 / 24"x24"	NAT / ST RECT	9
800x800 / 31½"x31½"	NAT RECT	9
600x1200 / 24"x48"	NAT RECT	9
1200x1200 / 48"x48"	NAT RECT	9
1200x2780 / 48"x110"	NAT RECT	6
600x600 / 24"x24"	ST RECT	20
800x800 / 31½"x31½"	ST RECT	20

Stucchi consigliati Recommended grouts		
KERAKOLL	44	
MAPEI	133 Sabbia	
LATICRETE	17 Marble Gelge	

GRUS RR 09



Formati Nominali Nominal Sizes	Superficie Finish	Spessore mm Thickness mm
150x600 / 6"x24"	NAT RECT	9
300x600 / 12"x24"	NAT RECT	9
600x600 / 24"x24"	NAT / ST RECT	9
800x800 / 31½"x31½"	NAT RECT	9
600x1200 / 24"x48"	NAT RECT	9
1200x1200 / 48"x48"	NAT RECT	9
1200x2780 / 48"x110"	NAT RECT	6
600x600 / 24"x24"	ST RECT	20
800x800 / 31½"x31½"	ST RECT	20

Stucchi consigliati Recommended grouts		
KERAKOLL	06	
MAPEI	112 Grigio Medio	
LATICRETE	78 Sterling Silver	



WALL: Hav RR 06 1200x2780 / 48"x110" NAT RECT
FLOOR: Hav RR 06 1200x1200 / 48"x48" NAT RECT

RIASSUNTIVO FORMATI ED IMBALLI

Summary of sizes and packaging | Übersicht über Formate und Verpackungen | Récapitulatif formats et emballages
Sinóptico de formatos y embalajes | Краткая информация о форматах и упаковках | 规格和包装概述

		9 mm						
Formati Nominali Nominal Sizes		150x600 6"x24"	300x600 12"x24"	600x600 24"x24"	800x800 31½"x31½"	600x1200 24"x48"	1200x1200 48"x48"	
Tutti i formati sono rettificati. All sizes are rectified.								
Superficie Finish		NAT	NAT	NAT	ST	NAT	NAT	ST
VIT RR 01	V2	■	■	■	■	■	■	■
GRÀ RR 02	V2	■	■	■	■	■	■	■
SVART RR 03	V2	■	■	■	■	■	■	■
MELK RR 04	V2	■	■	■	■	■	■	■
FARGE RR 05	V2	■	■	■	■	■	■	■
HAV RR 06	V2	■	■	■	■	■	■	■
ÖKEN RR 08	V2	■	■	■	■	■	■	■
GRUS RR 09	V2	■	■	■	■	■	■	■
Peso lordo per scatola Gross weight per box		26,92	26,15	22,16	22,16	27,36	30,00	61,56
Pezzi per scatola Pieces for box		14	7	3	3	2	2	2
mq. scatola sqm. box		1,26	1,26	1,08	1,08	1,28	1,44	2,88
Scatole / Full pallet boxes / Full pallet		40	40	40	40	48	35	20
mq. pallet sqm. pallet		50,40	50,40	43,20	43,20	61,44	50,40	57,60

RIASSUNTIVO FORMATI ED IMBALLI

Summary of sizes and packaging | Übersicht über Formate und Verpackungen | Récapitulatif formats et emballages
Sinóptico de formatos y embalajes | Краткая информация о форматах и упаковках | 规格和包装概述

		20 mm		
Formati Nominali Nominal Sizes		600x600 24"x24"	800x800 31½"x31½"	1200x1200 48"x48"
Tutti i formati sono rettificati. All sizes are rectified.				
Superficie Finish		ST	ST	ST
VIT RR 01	V2	■	■	■
GRÀ RR 02	V2	■	■	■
SVART RR 03	V2	■	■	■
FARGE RR 05	V2	■	■	■
HAV RR 06	V2	■	■	-
ÖKEN RR 08	V2	■	■	-
GRUS RR 09	V2	■	■	-
Peso lordo per scatola Gross weight per box		32,23	29,70	Please refer to page 562
Pezzi per scatola Pieces for box		2	1	
mq. scatola sqm. box		0,72	0,64	
Scatole / Full pallet boxes / Full pallet		30	42	
mq. pallet sqm. pallet		21,60	26,88	

		6 mm				12 mm
Formati Nominali Nominal Sizes		1200x1200 48"x48"	1200x2780 48"x110"	1600x1600 63"x63"	1600x3200 63"x126"	1620x3240 63¾"x127½"
Tutti i formati sono rettificati, eccetto il formato 1620x3240. All sizes except 1620x3240 are rectified.						
Superficie Finish		NAT	NAT	NAT	NAT	SP
GRÀ RR 02	V2	■	■	■	■	■
FARGE RR 05	V2	■	■	-	-	-
HAV RR 06	V2	-	■	-	-	-
ÖKEN RR 08	V2	-	■	-	-	-
GRUS RR 09	V2	-	■	-	-	-
Peso lordo per scatola Gross weight per box		41,44	Please refer to page 562	Please refer to page 562	Please refer to page 562	Please refer to page 562
Pezzi per scatola Pieces for box		2				
mq. scatola sqm. box		2,88				
Scatole / Full pallet boxes / Full pallet		20				
mq. pallet sqm. pallet		57,60				

Per tutti i grandi formati è possibile prevedere, su richiesta, e con un lotto minimo l'applicazione di una stuoia in fibra di vetro.
For big sizes, a fiberglass mat can be applied on request, with a minimum production batch.

Per garantire elevati standard di sicurezza e le migliori performance tecniche in relazione al loro utilizzo finale (piani cucina, top, arredi), tutte le lastre in formato 1620x3240 in spessore 12mm prevedono l'applicazione di una stuoia in fibra di vetro sul retro della lastra.
All the 1620x3240 slabs in 12mm thickness are provided with a fiberglass mat applied to the back of the slab, to guarantee substantial safety standards and suitable technical performance required for their final use (kitchen countertops, tops, furnishings).

ACCORGIMENTI SPECIFICI PER L'APPLICAZIONE DELLE GRANDI LASTRE IN 6 MM DI SPESSORE: p. 556 | Precautions for 6mm big slabs applications: page 556 | spezifische Anweisungen zur Nutzung der Grossformate in 6mm: seite 556 | Precauciones específicas para la aplicación de las grandes placas en 6 mm de espesor: page 556 | Precautions spécifiques pour la pose des grandes plaques en 6mm d'épaisseur: página 556 | специальные предосторожности для укладки больших плит толщиной 6 мм: страница 556

RACCOMANDAZIONI PER UTILIZZO E CURA DELLE LASTRE COUNTERTOPS p. 557 | How to use and take good care of the COUNTERTOPS slabs p. 557 | Tipps für den Einsatz und die Pflege der Platten COUNTERTOPS p. 557 | Recommandations pour l'utilisation et le soin des plaques COUNTERTOPS p.557 | Recomendaciones para el uso y cuidado de las placas COUNTERTOPS p. 557 | Рекомендации по использованию и уходу за плитками COUNTERTOPS p.557 | 规格的COUNTERTOPS系列陶瓷板的使用和护理建议 557

MY NOTES

.....

.....

.....

.....

.....

.....









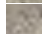


Maggiori informazioni
More information



NAT: Naturale | Natural | Natur/unpoliert | Naturelle | Natural | Натуральный | 天然
SP: Strutturata | Structured | Strukturiert | Structuré | Estructurado | Труктурированный | 结构
SP: Spazzolata

PEZZI SPECIALI

Special pieces | Sonderstücke | Pièces spéciales | Piezas especiales | специальные изделия | 特殊件

	Battiscopa*	Gradino A*	Gradino A*	Gradino B ang.	Gradino B	Gradino B	Gradino G
 Pezzi speciali Special pieces	72x600 27/8"x24"	300x600 12"x24"	330x1200 13 1/8"x48"	330x330 13 1/8"x13 1/8"	330x600 13 1/8"x24"	330x1200 13 1/8"x48"	300x600 12"x24"
 Superficie Finish	NAT	NAT	NAT	NAT	NAT	NAT	NAT
 VIT RR 01	■	■	■	■	■	■	■
 GRÅ RR 02	■	■	■	■	■	■	■
 SVART RR 03	■	■	■	■	■	■	■
 MELK RR 04	■	■	■	■	■	■	■
 FARGE RR 05	■	■	■	■	■	■	■
 HAV RR 06	■	■	■	■	■	■	■
 ÖKEN RR 08	■	■	■	■	■	■	■
 GRUS RR 09	■	■	■	■	■	■	■
 Pezzi per scatola Pieces for box	10	7	4	4	4	2	7

* Finitura a becco di civetta | One-round edge shaping | Ausführung mit Eckabrundung | Façonnage à bord rond | Acabado canto romo | Плитка с завалом | 鹰嘴边缘处理

DECORI

Decors | Dekore | Decors | Decoros | Декоры | 装饰砖

 **Patchy NAT**
400x347 / 15 3/4"x13 5/8"



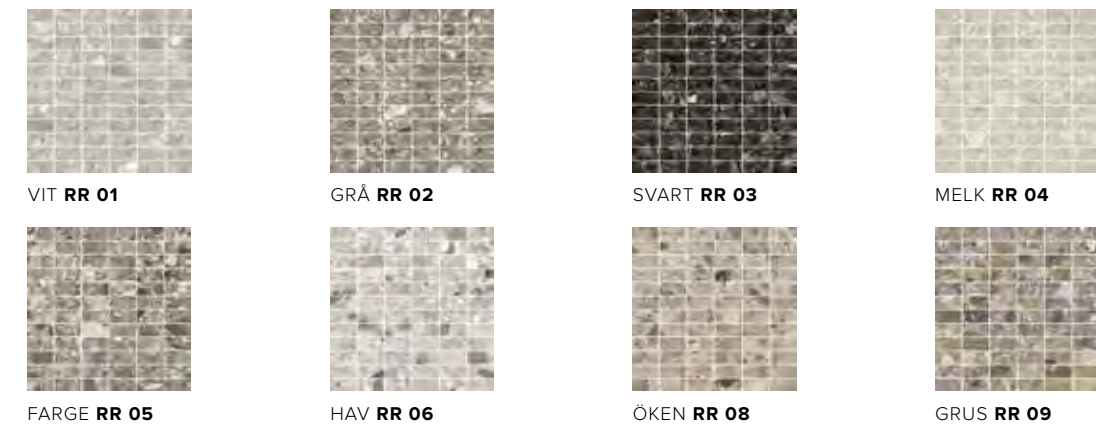
VIT RR 01 GRÅ RR 02 SVART RR 03 MELK RR 04
FARGE RR 05 HAV RR 06 ÖKEN RR 08 GRUS RR 09

NAT: Naturale | Natural | Natur/unpoliert | Naturelle | Natural | Натуральный | 天然
ST: Strutturata | Structured | Strukturiert | Structuré | Estructurado | Труктурированный | 结构
SP: Spazzolata

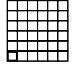
DECORI

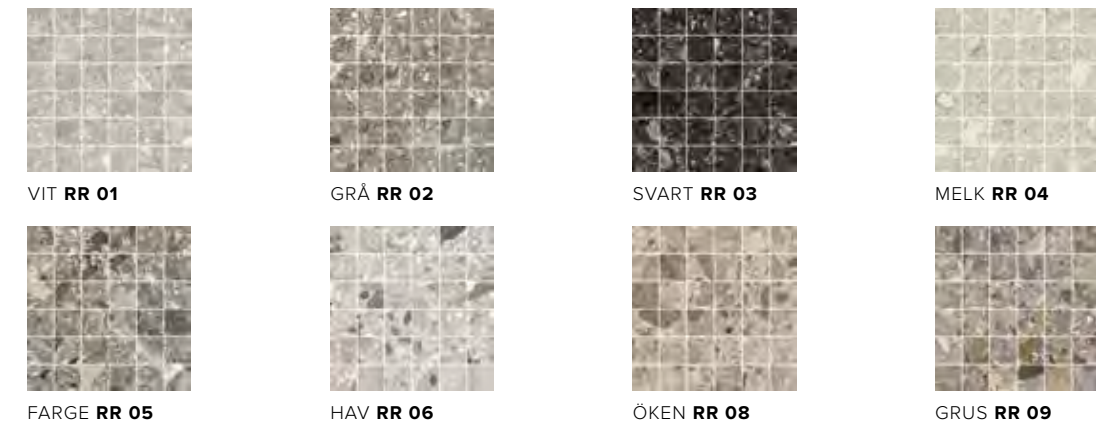
Decors | Dekore | Decors | Decoros | Декоры | 装饰砖

 **Mattoncino NAT**
300x300 / 12"x12"
Tessere 24x48 / 1"x2"



VIT RR 01 GRÅ RR 02 SVART RR 03 MELK RR 04
FARGE RR 05 HAV RR 06 ÖKEN RR 08 GRUS RR 09

 **Mosaico 36T NAT**
300x300 / 12"x12"
Tessere 48x48 / 2"x2"




VIT RR 01 GRÅ RR 02 SVART RR 03 MELK RR 04
FARGE RR 05 HAV RR 06 ÖKEN RR 08 GRUS RR 09

 **Portnoy NAT**
300x300 / 12"x12"



VIT RR 01 GRÅ RR 02 SVART RR 03 MELK RR 04
FARGE RR 05 HAV RR 06 ÖKEN RR 08 GRUS RR 09

MATTONCINO, MOSAICO 36T, PORTNOY, PATCHY:
Decoro su rete | Mesh-backed decoration | Dekor auf netz | Décor sur filet | Decoración en red | Декор в сету | 网板背帖装饰件

 **Pezzi per scatola**
Pieces for box

Mattoncino	6
Mosaico 36T	6
Portnoy	6
Patchy	6



FLOOR: Melk **RR 04** 600x1200 / 24"x48" NAT RECT
 WALL: Melk **RR 04** 300x600 / 12"x24" - 150x600 / 6"x24" NAT RECT

CARATTERISTICHE TECNICHE

Technical specifications | Technische Eigenschaften | Caractéristiques techniques | Características técnicas | Технические характеристики | 技术特征

STANDARD EN 14411 - G

	CARATTERISTICHE TECNICHE TECHNICAL DATA TECHNISCHE DATEN CARACTERISTIQUES TECHNIQUES CARACTERÍSTICAS TÉCNICAS ТЕХНИЧЕСКИЕ ХАРАКТЕРИСТИКИ 技术特征	NORMA STANDARD NORM NORME NORMA ЗНАЧЕНИЯ 标准	VALORI PRESCRITTI DALLE NORME EN 14411 - G INTERNATIONAL STANDARDS EN 14411 - G INTERNATIONALE NORMWERTE EN 14411 - G VALEURS PREVUES PAR LES NORMES EN 14411 - G VALORES PREVISTOS POR LAS NORMAS EN 14411 - G ПРЕДУСМОТРЕННЫЕ СТАНДАРТОМ EN 14411-G EN 14411 - G标准规定值	*VALORE MEDIO MIRAGE MIRAGE AVERAGE VALUE MIRAGE MITTELWERT VALEURS MOYEN MIRAGE VALOR MEDIO MIRAGE СРЕДНЕЕ ЗНАЧЕНИЕ MIRAGE MIRAGE平均值
	CARATTERISTICHE DIMENSIONALI - SIZE CHARACTERISTICS - MASSEIGENSCHAFTEN DETERMINATION DES CARACTERISTIQUES DIMENSIONELLES - CARACTERÍSTICAS DIMENSIONALES - РАЗМЕРНЫЕ ХАРАКТЕРИСТИКИ - 尺寸特征			
	LATI SIDES - SEITEN COTES - CANTOS РАЗМЕРЫ СТОРОН - 側邊	EN ISO 10545-2	± 0,3% MAX (± 1,0 mm MAX)	CONFORME COMPLYING
	SPESORE THICKNESS - DICKE ÉPAISSEUR - ESPESOR ТОЛЩИНА - 厚度	EN ISO 10545-2	± 5,0% MAX (± 0,5 mm MAX)	CONFORME COMPLYING
	RETTILINEITÀ DEGLI SPIGOLI STRAIGHTNESS OF SIDES - GERADLINIGKEIT DER KANTEN RECTITUDE DES ARETES - RECTITUD DE LOS CANTOS КОСОУГОЛЬНОСТЬ - 边角平直度	EN ISO 10545-2	± 0,3% MAX (± 0,8 mm MAX)	CONFORME COMPLYING
	ORTOGONALITÀ RECTANGULARITY - RECHTWINKLIGKEIT PERPENDICULARITÉ - ORTOGONALIDAD КРИВИЗНА СТОРОН - 直角度	EN ISO 10545-2	± 0,3% MAX (± 1,5 mm MAX)	CONFORME COMPLYING
	PLANARITÀ SURFACE FLATNESS - EBENFLÄCHIGKEIT PLANEITE DE SURFACE - PLANEIDAD КРИВИЗНА ЛИЦЕВОЙ ПОВЕРХНОСТИ - 平整度	EN ISO 10545-2	± 0,4% MAX (± 1,8 mm MAX)	CONFORME COMPLYING
	ASSORBIMENTO D'ACQUA WATER ABSORPTION - WASSERAUFNAHME ABSORPTION D'EAU - ABSORCIÓN DE AGUA ВОДОПОГЛОЩЕНИЕ - 吸水率	EN ISO 10545-3	≤ 0,5%	≤ 0,1%
	RESISTENZA ALLA FLESSIONE FLEXION RESISTANCE - BIEGEFESTIGKEIT RESISTANCE A LA FLEXION - RESISTENCIA A LA FLEXIÓN ПРЕДЕЛ ПРОЧНОСТИ ПРИ ИЗГИБЕ - 抗弯强度	EN ISO 10545-4	S ≥ 700 N (< 7,5 mm) S ≥ 1.300 N (> 7,5 mm) R ≥ 35 N/mm².	≥ 6 mm: S≥1100N R≥45 N/mm² ≥ 9 mm: S≥2.400N R≥48 N/mm² ≥ 12 mm: S≥4.000N R≥48 N/mm² ≥ 20 mm: S≥12.500N R≥48 N/mm²
	RESISTENZA ALL'URTO IMPACT RESISTANCE - STOSSFESTIGKEIT RESISTANCE AUX CHOCES - RESISTENCIA A LOS GOLPES УДАРСТОЙКОСТЬ - 抗冲击强度	EN ISO 10545-5	VALORE DICHIARATO DECLARED VALUE	> 0,80
	RESISTENZA ALL'ABRASIONE ABRASION RESISTANCE - ABRIEBFESTIGKEIT RESISTANCE A L'ABRASION - RESISTENCIA A LA ABRASIÓN СТОЙКОСТЬ К ИСТИРАНИЮ - 耐磨强度	EN ISO 10545-6	≤ 175 mm³	< 150 mm³
	COEFFICIENTE DI DILATAZIONE TERMICA LINEARE COEFFICIENT OF LINEAR THERMAL-EXPANSION - LINEARER WÄRMEAUDEHNUNGSKOEFFIZIENT COEFFICIENT DE DILATATION THERMIQUE LINEAIRE - COEFICIENTE DE DILATACIÓN TÉRMICA LINEAL КОЭФФИЦИЕНТ ЛИНЕЙНОГО ТЕРМИЧЕСКОГО РАСШИРЕНИЯ - 线性热膨胀系数	EN ISO 10545-8	-	α=6,5x10 ⁻⁶ °C ⁻¹
	RESISTENZA AGLI SBALZI TERMICI RESISTANCE TO THERMAL SHOCKS - BESTÄNDIGKEIT GEGEN TEMPERATURSCHWANKUNGEN RESISTANCE AUX CHOCES THERMIQUES - RESISTENCIA A LOS CHOQUES TÉRMICOS СТОЙКОСТЬ К ПЕРЕПАДАМ ТЕМПЕРАТУРЫ - 耐热突变性	EN ISO 10545-9	TEST SUPERATO SECONDO EN ISO 10545-1 PASS ACCORDING EN ISO 10545-1	NESSUN DANNO NO DAMAGE
	RESISTENZA AL GELO FROST RESISTANCE - FROSTBESTÄNDIGKEIT RESISTANCE AU GEL - RESISTENCIA AL HIELO МОРОЗОСТОЙКОСТЬ - 耐冻性	EN ISO 10545-12	TEST SUPERATO SECONDO EN ISO 10545-1 PASS ACCORDING EN ISO 10545-1	NESSUN DANNO NO DAMAGE
	RESISTENZA ALL'ATTACCO CHIMICO RESISTANCE TO CHEMICALS - CHEMIKALIENBESTÄNDIGKEIT RESISTANCE A L'ATTAQUE CHIMIQUE - RESISTENCIA QUÍMICA ХИМИЧЕСКАЯ СТОЙКОСТЬ - 耐化学品作用	EN ISO 10545-13	B MIN.	A LA HA
	RESISTENZA ALLE MACCHIE RESISTANCE TO STAINS - FLECKENBESTÄNDIGKEIT RESISTANCE AUX TACHES - RESISTENCIA A LAS MANCHAS УСТОЙЧИВОСТЬ К ПЯТНООБРАЗОВАНИЮ - 防污性	EN ISO 10545-14	VALORE DICHIARATO DECLARED VALUE	5
	CESSIONE DI PIOMBO E CADMIO LEAD AND CADMIUM DISCHARGE - ABGABE VON BLEI UND CADMIUM PERTE DE PLOMB ET CADMIUM - CESIÓN DE PLOMO Y CADMIO ВЫДЕЛЕНИЕ СВИНЦА И КАДМИЯ - 铅和镉的排放	EN ISO 10545-15	VALORE DICHIARATO DECLARED VALUE	< AL LIMITE DI RILEVAMENTO < THAN INSTRUMENT LIMIT
				NAT ST ST 20 mm
	DM 236/89 BCRA		> 0,40	> 0,40 > 0,40 > 0,40
	ANSI A326.3		Wet and Dry	≥ 0,42 ≥ 0,55 ≥ 0,55
	AS 4586		-	P2 P4 P4
	DIN 51130		-	R10 R11 R11
	DIN 51097		-	A A+B+C A+B+C
	UNE 41901		≥ CL1	CL2 CL3 CL3
	BS 7976 sl.96-4S		Wet and Dry	≥ 0,36 ≥ 0,36 ≥ 0,36
	BS 7976 sl.55-TRL		Wet and Dry	- - -

Per i certificati specifici, contattare Mirage SpA - For specific certificates, please contact Mirage SpA - Für die speziellen Zertifikate wenden Sie sich bitte an Mirage SpA - Pour les certificats spécifiques, veuillez contacter Mirage SpA
 Para los certificados específicos, contactar Mirage SpA - Для сертификатов обращайтесь в компанию Mirage SpA - 关于具体的证书, 请联系Mirage SpA公司