



GOLDEN BORG

PUMICE

CLUSTER LIGHT

HIDDEN LIGHT



PIECE ALPI

MOSS

CORTEX



OUTDOOR-WALL
 Hidden Light 120x278
 WALL
 Pigmenti Ocean 100x300
 WALL
 Mosaico Micro
 FLOOR
 Indoor Cluster Light 120x120
 Outdoor Cluster Light 60x120 Grip

WALL
Pigmenti Pumice 100x300

WALL
Cluster Light 120x278

WALL
Mosaico Macro

FLOOR
Hidden Mid 120x120





MASTER BROWN



CLUSTER MID

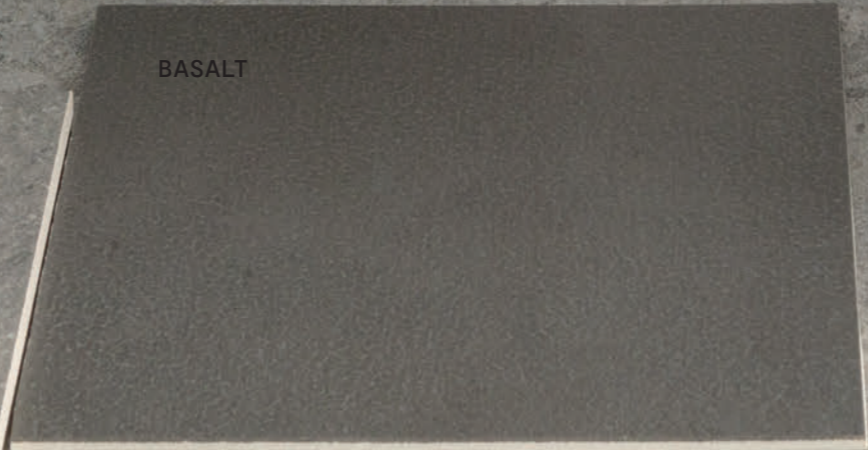
HIDDEN MID



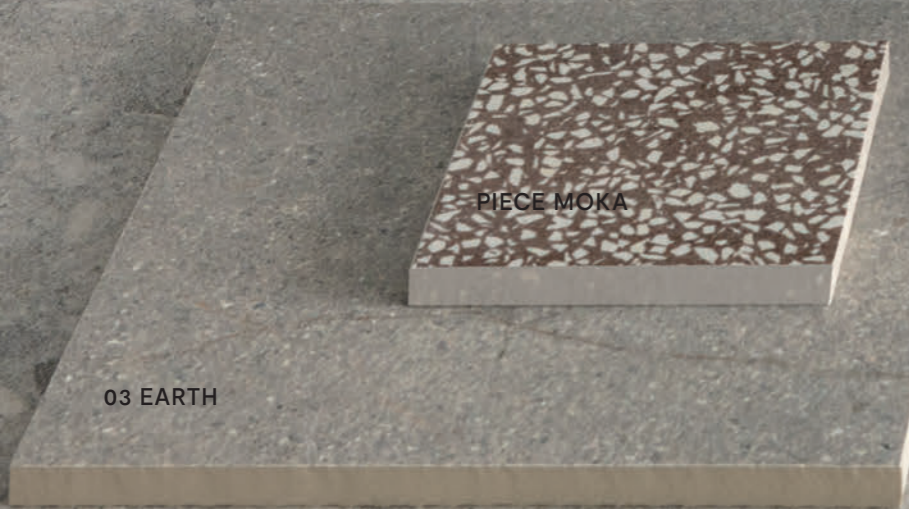
Side Stone



PIECE MOKA



BASALT



03 EARTH





Hidden Dark 120x120



Ⓢ WALL Pigment Harvest
Ⓢ WALL Gramma 72 Cluster Light
Ⓢ VOLUME Concreto Light
Ⓢ FLOOR Cluster Dark 120x120

AMBER

CLUSTER DARK

HIDDEN DARK



PIECE SIENA

MAUVE

MASTER COAL



Ⓢ KITCHEN
Cluster Light 120x278
Ⓢ BACKSPLASH
Mosaico 36 Hidden Light

Ⓢ WALL
Indoor Hidden Dark 120x278
Outdoor Hidden Light 120x278

Ⓢ FLOOR
Indoor Cluster Dark 120x120
Outdoor Cluster Dark 60x120 grip L2

Colori / Colors

Hidden Light

Cluster Light



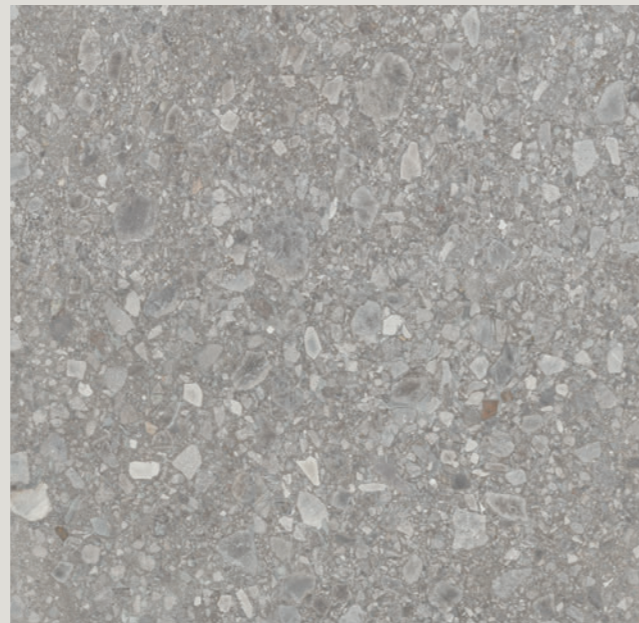
Hidden Dark

Cluster Dark



Hidden Mid

Cluster Mid



Formati Slimtech / Slimtech Sizes ^{LR7}



Gres porcellanato laminato
/Laminated porcelain stoneware
Spessore/thickness: 6mm

PROTECT
ANTIBATTERICO - ANTIMICROBIAL



120x278cm
48"x109 1/2"
Nat
Hidden / Cluster

Finiture / Finishes

Nat



residenziale
residential



commerciale leggero
light commercial



commerciale intensivo
intensive commercial



1. RUVIDITÀ RIDOTTA E SUPERFICIE MORBIDA AL TATTO.
Reduced roughness and soft-touch surface.



2. GRADO DI RESISTENZA ALLO SCIVOLAMENTO - R10.
Slip resistance rating - R10.



3. FACILE DA PULIRE E MANUTENERE.
Easy to clean and maintain.



Formati Gres / Stoneware Sizes ^{LR7}



Gres porcellanato / Porcelain stoneware
Spessore/thickness: 9mm

PROTECT
ANTIBATTERICO - ANTIMICROBIAL



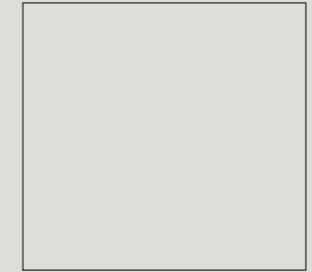
30x60cm
12"x24"
Nat
Hidden / Cluster



60x60cm
24"x24"
Nat, Grip
Hidden / Cluster



60x120cm
24"x48"
Nat, Grip
Hidden / Cluster



120x120cm
48"x48"
Nat
Hidden / Cluster

⊕ L2 - 20mm
Grip L2
Cluster

Finiture / Finishes

Nat



residenziale
residential



commerciale leggero
light commercial



commerciale intensivo
intensive commercial

Grip



esterno
outdoor



Formati speciali / Special sizes



Gamma 72*



14,5x49,8cm
5 45/64"x19 1/2"
Nat
Cluster

* Realizzato con sistema di taglio a disco senza bisello. L'eventuale presenza di leggere irregolarità del bordo o di scostamenti dimensionali fino ad 1 mm è da ritenersi conforme.

Made with a disc cutting system without a bevel. Any slight irregularities of the edge or size deviations of up to 1 mm should be regarded as compliant.

Mosaici / Mosaics



Mosaico 36

Disponibile in tutti i colori
All colors available



30x30cm
12"x12"
Hidden / Cluster

Mosaico Micro



30x30cm
12"x12"
Mix Cluster

Mosaico Macro

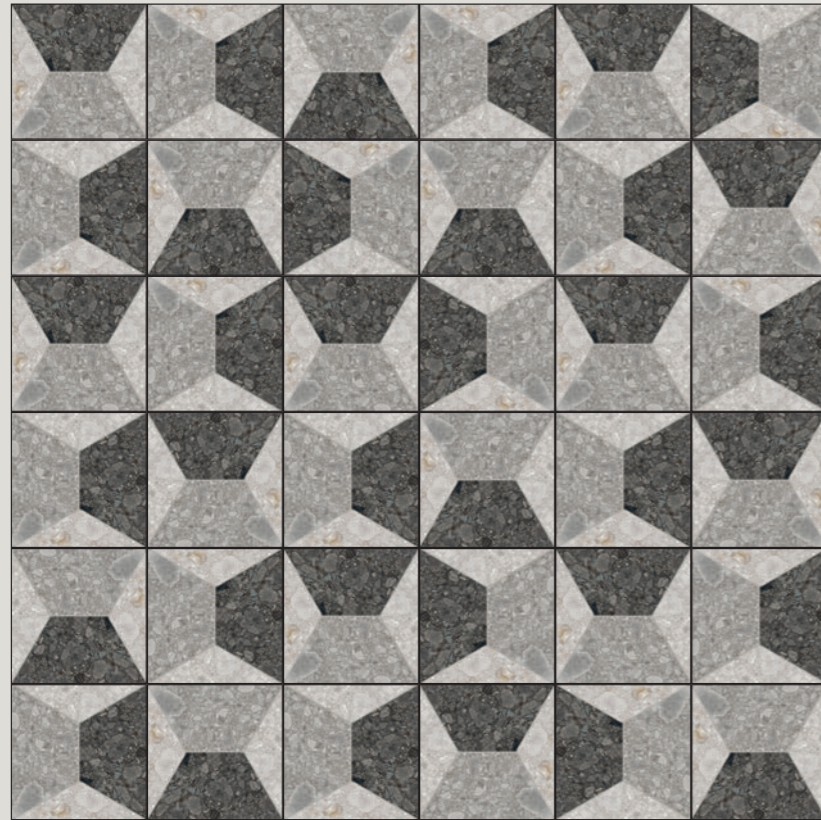


30x30cm
12"x12"
Mix Cluster

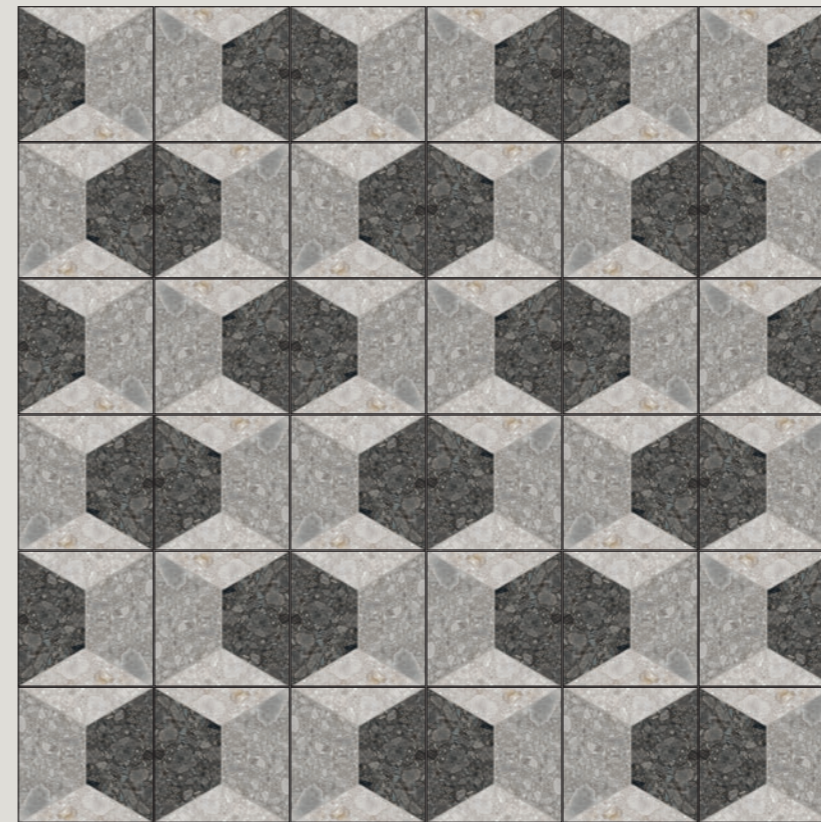
Mosaico Mega



30x30cm
12"x12"
Mix Cluster



Mosaico Mega / pattern A



Mosaico Mega / pattern C



Mosaico Mega / pattern B

Fondi / Plain tiles

			Hidden Light	Cluster Light	Hidden Mid	Cluster Mid	Hidden Dark	Cluster Dark
60x120cm 24"x48"		NAT	LGXSD10	LGXSD40	LGXSD20	LGXSD50	LGXSD00	LGXSD30
		GRIP	LGXSD15	LGXSD45	LGXSD25	LGXSD55	LGXSD05	LGXSD35
60x60cm 24"x24"		NAT	LGWSD10	LGWSD40	LGWSD20	LGWSD50	LGWSD00	LGWSD30
		GRIP	LGWSD15	LGWSD45	LGWSD25	LGWSD55	LGWSD05	LGWSD35
30x60cm 12"x24"		NAT	LGVSD10	LGVSD40	LGVSD20	LGVSD50	LGVSD00	LGVSD30
120x120cm 24"x24"		NAT	LG8SD10	LG8SD15	LG8SD20	LG8SD25	LG8SD00	LG8SD05
60x120cm 24"x48"		GRIP L2	-	LGXSD61	-	LGXSD62	-	LGXSD60

Formati speciali / Special sizes

			Hidden Light	Cluster Light	Hidden Mid	Cluster Mid	Hidden Dark	Cluster Dark
Gamma 72 14,5x49,8cm 5 ^{45/64} "x19 ^{1/2} "		NAT	-	LGZSD15	-	LGZSD25	-	LGZSD05

Mosaici / Mosaics


			Hidden Light	Cluster Light	Hidden Mid	Cluster Mid	Hidden Dark	Cluster Dark
Mosaico 36		NAT	LGCS10	LGCS15	LGCS20	LGCS25	LGCS00	LGCS05
Mosaico Micro		NAT	LGCS50					
Mosaico Macro		NAT	LGCS51					
Mosaico Mega		NAT	LGCS52					

Formati Slimtech / Slimtech sizes


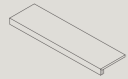


			Hidden Light	Cluster Light	Hidden Mid	Cluster Mid	Hidden Dark	Cluster Dark
120x278cm 48"x109 ^{1/2} "		NAT	LS6SS10	LS6SS40	LS6SS20	LS6SS50	LS6SS00	LS6SS30

Pezzi Speciali / Trims

Spessore/thickness: 9mm

 gres porcellanato

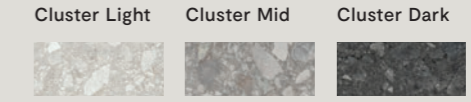


Sezione gradino 4cm / 1 9/16"			Hidden Light	Cluster Light	Hidden Mid	Cluster Mid	Hidden Dark	Cluster Dark	
Battiscopa		7,5x60cm 3 1/8"x24" rett	GRIP	LGRSD10	LGRSD40	LGRSD20	LGRSD50	LGRSD00	LGRSD30
Gradino Plus*		35x120cm 13 3/4"x48" rett	GRIP	LGDS10	LGDS40	LGDS20	LGDS50	LGDS00	LGDS30
Angolo dx Gradino Plus*		35x120cm 13 3/4"x48" rett	GRIP	LGDS11	LGDS41	LGDS21	LGDS51	LGDS01	LGDS31
Angolo sx Gradino Plus*		35x120cm 13 3/4"x48" rett	GRIP	LGDS12	LGDS42	LGDS22	LGDS52	LGDS02	LGDS32

Pezzi Speciali / Trims

Spessore/thickness: 20mm

 L2



				Cluster Light	Cluster Mid	Cluster Dark
Griglia*		15x60cm 6"x24" rett	GRIP L2	LG1SD10	LG1SD20	LG1SD00
Griglia Angolare sx*		15x60cm 6"x24" rett	GRIP L2	LG1SD12	LG1SD22	LG1SD02
Griglia Angolare dx*		15x60cm 6"x24" rett	GRIP L2	LG1SD11	LG1SD21	LG1SD01
Costa Toro*		30x60cm 12"x24" rett	GRIP L2	LGDSDF1	LGDSDF2	LGDSDF0
Costa Toro Angolare sx*		30x60cm 12"x24" rett	GRIP L2	LGDSDB3	LGDSDB5	LGDSDB1
Costa Toro Angolare dx*		30x60cm 12"x24" rett	GRIP L2	LGDSDB2	LGDSDB4	LGDSDB0
Costa Retta*		30x60cm 12"x24" rett	GRIP L2	LGSDC1	LGSDC2	LGSDC0
Costa Retta Angolare sx*		30x60cm 12"x24" rett	GRIP L2	LGSDA3	LGSDA5	LGSDA1
Costa Retta Angolare dx*		30x60cm 12"x24" rett	GRIP L2	LGSDA2	LGSDA4	LGSDA0
Costa Toro Step*		30x60cm 12"x24" rett	GRIP L2	LGSDJ1	LGSDJ2	LGSDJ0
Costa Retta Step*		30x60cm 12"x24" rett	GRIP L2	LGSDG1	LGSDG2	LGSDG0
Costa Retta con Gocciolatoio*		30x60cm 12"x24" rett	GRIP L2	LGSDH1	LGSDH2	LGSDH0
Costa Toro con Gocciolatoio*		30x60cm 12"x24" rett	GRIP L2	LGSDY1	LGSDY2	LGSDY0

* Su richiesta. Per maggiori informazioni circa quantità minime e tempi di consegna rivolgersi all'ufficio commerciale. / Upon request. For more information about minimum quantities and delivery times please contact the sales department.

Caratteristiche tecniche / Technical characteristics



Gres porcellanato laminato UGL /Laminated porcelain stoneware UGL SLIMTECH 6mm		Conforme/according to: ISO 13006 G (Gruppo/Group Bla) EN 14411 G (Gruppo/Group Bla) ANSI A137.3 (Gauged porcelain slabs)		
	Metodo di prova /Test method	Requisiti prescritti /Required values	Valori medi /Average values	
Assorbimento d'acqua /Water absorption	ISO 10545-3 ASTM C373	≤ 0,5%	0,1%	
Resistenza a flessione /Modulus of rupture	ISO 10545-4 ASTM C1505	≥ 35 N/mm ² ≥ 6000 PSI	50 N/mm ² ≥ 6000 PSI	
Resistenza all'abrasione profonda /Resistance to deep abrasion	ISO 10545-6 ASTM C1243	≤ 175 mm ³	Conforme/conforms	
Dilatazione termica lineare /Linear thermal expansion	ISO 10545-8 ASTM C372	Requisito non previsto/No provision Requisito non previsto/No provision	$\alpha \leq 7 \times 10^{-6} \text{ }^\circ\text{C}^{-1}$ $\alpha \leq 4.4 \times 10^{-6} \text{ }^\circ\text{F}^{-1} / \alpha \leq 8 \times 10^{-6} \text{ }^\circ\text{C}^{-1}$	
Resistenza alle macchie /Stain resistance	ISO 10545-14 ASTM C1378	Classe/Class 3 Min. Come indicato dal produttore /As indicated by manufacturer	5 Resistente/Resistant A Resistente/Resistant	
Resistenza all'attacco chimico* /Chemical resistance	ISO 10545-13 ASTM C650	Come indicato dal produttore /As indicated by manufacturer Come indicato dal produttore /As indicated by manufacturer	LA—HA Resistente/Resistant A Resistente/Resistant	
Resistenza al gelo /Frost resistance	ISO 10545-12 ASTM C1026	Nessuna alterazione/No alteration Come indicato dal produttore /As indicated by manufacturer	Resistente/Resistant Resistente/Resistant	
Resistenza allo scivolamento /Slip resistance	DIN EN 16165 Annex B BCR-TORTUS ANSI A326.3	— — —	R10 $\mu > 0,40$ ID - DCOF ≥ 0.42 (dry) IW - DCOF ≥ 0.42 (wet)	
Reazione al fuoco /Fire reaction	EN 13823 EN 9239-1	CPR (UE) 305/2011, 2000/147/CE, UNI EN 13501-1	Classe/Class A1 (wall) Classe/Class A1 _{fl} (floor)	
Diffusione di fiamma /Flame spread	ASTM E84	—	Classe/Class A	
Stonalizzazione /Shade variation	ANSI A137.3	Come indicato dal produttore /As indicated by manufacturer	V ₃ Hidden	V ₄ Cluster Variazioni sostanziali /Substantial variation

Fuga minima consigliata: vedi Manuale Tecnico Slimtech/minimum suggested joint: refer to Slimtech Technical Manual.
*Ad esclusione dell'acido fluoridrico e derivati/excluding hydrofluoric acid and its derivatives

Caratteristiche tecniche / Technical characteristics



Gres tutta massa UGL / Full-body porcelain UGL		Conforme / According to: ISO 13006 G (Gruppo/Group Bla) EN 14411 G (Gruppo/Group Bla) ANSI A137.1 Porcelain tiles (P1 Class)		
	Metodo di prova /Test method	Requisiti prescritti /Required values	Valori medi /Average values	
Assorbimento d'acqua /Water absorption	ISO 10545-3 ASTM C373	≤ 0,5%	0,05%	
Sforzo di rottura S /Breaking strength	ISO 10545-4 ASTM C648	≥ 1300 N ≥ 250 lbf	1.800 N 9mm 13.600 N 20mm 400 lbf 9mm 2.800 lbf 20mm	
Resistenza a flessione /Modulus of rupture	ISO 10545-4	≥ 35 N/mm ²	50 N/mm ²	
Resistenza all'abrasione profonda /Resistance to deep abrasion	ISO 10545-6 ASTM C1243	≤ 175 mm ³	145 mm ³	
Dilatazione termica lineare /Linear thermal expansion	ISO 10545-8 ASTM C372	Requisito non previsto/No provision Requisito non previsto/No provision	$\alpha \leq 7 \times 10^{-6} \text{ }^\circ\text{C}^{-1}$ $\alpha \leq 4.4 \times 10^{-6} \text{ }^\circ\text{F}^{-1} / \alpha \leq 8 \times 10^{-6} \text{ }^\circ\text{C}^{-1}$	
Resistenza alle macchie /Stain resistance	ISO 10545-14 ASTM C1378	Classe/Class 3 Min. Come indicato dal produttore /As indicated by manufacturer	5 Resistente/Resistant A Resistente/Resistant	
Resistenza all'attacco chimico* /Chemical resistance	ISO 10545-13 ASTM C650	Come indicato dal produttore /As indicated by manufacturer Come indicato dal produttore /As indicated by manufacturer	LA—HA Resistente/Resistant A Resistente/Resistant	
Resistenza al gelo /Frost resistance	ISO 10545-12 ASTM C1026	Nessuna alterazione/No alteration Come indicato dal produttore /As indicated by manufacturer	Resistente/Resistant Resistente/Resistant	
Resistenza allo scivolamento /Slip resistance	DIN EN 16165 Annex B BCR-TORTUS ANSI A326.3 AS/NZS 4586 BS 7976-2	— — — — —	R10 (Nat) - R11 (Grip - Grip L2) A+B (Nat) - A+B+C (Grip - Grip L2) $\mu > 0,40$ P3 (Nat) - P4 (Grip - Grip L2) PTV 36+ WET (Sl.96) (Nat) - PTV 36+ WET (Sl.96 & Sl.55) (Grip - Grip L2)	
Reazione al fuoco /Fire reaction	EN 13823 EN 9239-1	CPR (UE) 305/2011, 2000/147/CE, UNI EN 13501-1	Classe / Class A1 (wall) Classe / Class A1 _{fl} (floor)	
Diffusione di fiamma /Flame spread	ASTM E84	No provision	Class A	
Fuga minima consigliata (**) recommended minimum joint (**)	INDOOR OUTDOOR	— —	2mm 5mm circa/ approx.	
Stonalizzazione /Shade variation	ANSI A137.1	Come indicato dal produttore /As indicated by manufacturer	V ₃ Hidden	V ₄ Cluster Variazioni sostanziali /Substantial variation

(*) ad esclusione dell'acido fluoridrico e derivati / excluding hydrofluoric acid and its derivatives

(**) salvo diversa indicazione dei Codici di Posa Nazionali. La larghezza delle fughe deve comunque essere decisa dalla Direzione Lavori
the width of grout joints must be established by the installation supervisor, unless grout widths are regulated by national laying standards

(***) Ad eccezione delle zone caratterizzate da un maggior rischio di scivolamento (come docce pubbliche, piscine coperte, ecc.) per le quali si consiglia una superficie Grip / With the exception of areas characterized by a higher risk of slipping (such as public showers, indoor swimming pools, etc.) for which a Grip surface is recommended

Imballi / Packing

Articolo	Scatola			Pallet				
	cm	inch	pz.	mq	kg	scat.	mq	kg
Fondo	120x120	48"x48"	1	1,44	31,8	28	40,3	890,4
Fondo	60x120	24"x48"	2	1,44	31,8	36	51,8	1.144,8
Fondo	60x60	24"x24"	4	1,44	31,8	32	46,1	1.017,6
Fondo	30x60	12"x24"	9	1,62	35,0	32	51,8	1.120,0
Mosaico Micro	30x30	12"x12"	5	0,45	9,3	60	27,0	588,0
Mosaico Macro	30x30	12"x12"	5	0,45	9,3	60	27,0	588,0
Mosaico Mega	30x30	12"x12"	5	0,45	9,3	60	27,0	588,0
Mosaico 36	30x30	12"x12"	5	0,45	9,3	60	27,0	558,0
Gamma 72	14,5x49,8	5 ^{3/4} "x19 ^{1/2} "	14	1,01	22,2	32	32,3	710,4
Battiscopa	7,5x60	3 ^{1/8} "x24"	12	7,2 m.l.	11,6	60	432 m.l.	696,6
Gradino plus	35x120	13 ^{3/4} "x48"	2	0,84	34,0	12	10,1	408,0
Angolo gradino plus	35x120	13 ^{3/4} "x48"	1	0,42	17,0	24	10,1	408,0

Articolo	Scatola			Pallet				
	cm	inch	pz.	mq	kg	scat.	mq	kg
Fondo (20mm)	60x120	24"x48"	1	0,72	32,5	36	25,9	1.170,0
Griglia	15x60	6"x24"	2	0,18	8,0	100	18,0	800,0
Griglia Angolare sx - dx	15x60	6"x24"	2	0,16	7,0	100	15,8	700,0
Costa Toro	30x60	12"x24"	1	0,18	8,1	100	18,0	812,5
Costa Toro Angolare sx - dx	30x60	12"x24"	1	0,14	6,1	100	13,5	610,0
Costa Retta	30x60	12"x24"	1	0,18	8,1	100	18,0	812,5
Costa Retta Angolare sx - dx	30x60	12"x24"	1	0,14	6,1	100	13,5	610,0
Costa Toro Step	30x60	12"x24"	1	0,18	8,0	100	18,0	812,5
Costa Retta Step	30x60	12"x24"	1	0,18	8,0	100	18,0	812,5
Costa Retta con Gocciolatoio	30x60	12"x24"	1	0,18	8,0	100	18,0	812,5
Costa Toro con Gocciolatoio	30x60	12"x24"	1	0,18	8,0	100	18,0	812,5

Articolo	Scatola			Pallet				
	cm	inch	pz.	mq	kg	scat.	mq	kg
Fondo	120x278	48"x109 ^{1/2} "	1	3,34	47,0	18	60,0	846,0

Certificazioni / Certifications



*MARCHIO CE Le DOP sono disponibili sul sito internet/DOP are available on the website leaceramiche.com

**LEED Le Ceramiche, è membro di GBC Italia, organizzazione che promuove sul territorio italiano la realizzazione di edifici nel rispetto dell'ambiente, della salute e del benessere delle persone che ci vivono e lavorano./Lea Ceramiche is a member of the U.S. Green Building Council: this is an organization that promotes buildings that are environmentally responsible, profitable and healthy places to live and work.

***EPD I prodotti Lea Ceramiche possiedono Dichiarazione Ambientale di Prodotto (EPD) specifica di tipo III, certificata da ente terzo indipendente secondo le normative ISO 14025 e EN 15804. Disponibile su richiesta.

Lea Ceramiche products have a type III specific Environmental Product Declaration (EPD). This is certified by an independent third party according to ISO 14025 and EN 15804 standards. Available on request.

Destinazioni d'uso gres porcellanato / Intended use legenda / key



Alberghi
Hotels



Locali pubblici
Public spaces



Abitazioni
Housing



Aeroporti
Airports



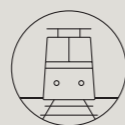
Bar - Ristoranti
Bar - Restaurants



Centri commerciali
Malls



Negozi
Shops



Stazioni
Train stations

Impieghi L2 / Uses



Vialetti
Walkways



Parcheggi
Parking areas



Parchi pubblici - giardini
Public parks - gardens



Terrazze
Terraces



Camminamenti piscine
Pool decks



Zone industriali
Industrial areas



Stabilimenti balneari
Beach resorts



Aree urbane
Urban areas

Destinazioni d'uso slimtech / Intended use legenda / key



Posa a pavimento
Floor installation



Posa a parete
Wall installation

Situazioni applicative sia per interventi di nuova costruzione che di ristrutturazioni con posa in sovrapposizione a pavimenti preesistenti.

For new buildings and refurbishing, for installation on pre-existing floors.

IN INTERNO

Residenziale (cucine, bagni, living, aree comuni condominiali, ed ogni altro ambiente di uso residenziale)

Commerciale leggero (uffici, uffici aperti al pubblico, sale d'attesa, negozi, bagni, sale di ristoranti, autosaloni, bar, cinema, ambulatori, cliniche)

Commerciale intensivo (aree comuni di centri commerciali, hall di alberghi, mense, fast food, discoteche, ospedali.)
Ad esclusione di zone sottoposte al passaggio di carichi pesanti concentrati (ad es. carrelli a ruote dure)

IN ESTERNO

A condizione che le superfici siano coperte (es. logge, balconi coperti, ecc.) e perfettamente impermeabilizzate. Si consiglia l'utilizzo di formati con lati non superiori a 120cm.

INTERIORS

Residential (kitchens, bathrooms, living rooms, common apartment block areas and any other residential environment)

Light Commercial (offices, offices open to the general public, waiting rooms, shops, bathrooms, restaurant dining rooms, bars, car showrooms, cinemas, surgeries/clinics)

Intensive commercial. (common areas of shopping centres, hotel halls, canteens, fastfood restaurants, dance clubs, hospitals.)

With the exception of areas subject to heavy concentrated loads (e.g. trolleys with hard wheels)

EXTERIORS

Upon condition that surfaces are sheltered (e.g. loggias, covered balconies, etc.) and made totally impervious. We recommend the use of sizes that have sides not exceeding 120cm.

Situazioni applicative sia per interventi di nuova costruzione che di ristrutturazioni con posa in sovrapposizione a pavimenti preesistenti.

For new buildings and refurbishing, for installation on pre-existing floors.

IN INTERNO

Qualunque ambiente residenziale e commerciale.

INTERIORS

Any residential and commercial environment.

Destinazioni d'uso speciali slimtech / Slimtech special uses legenda / key



Facciate ventilate*
Ventilated facades



Rivestimenti termici a cappotto
External wall thermal insulation system



Rivestimenti vasche piscine
Bathtubs and swimming pool cladding



Superfici da rivestire nel settore dell'arredamento
For furniture surfaces

Destinazioni speciali/Special uses: in funzione delle specifiche del progetto, in abbinamento a sistemi costruttivi indicati da Panariagroup e approvati dalla Direzione Lavori/depending on project specifications and in combination with the construction systems recommended by Panariagroup and approved by the Installation Supervisor. *Solo dopo l'applicazione della rete in fibra di vetro/only after the application of fiberglass mesh.

Colophon / Company info

LEA CERAMICHE
Via Cameazzo, 21
41042 Fiorano Modenese
Modena Italy

T +39 0536 837811
E info@leaceramiche.it
leaceramiche.com

Panariagroup
Industrie Ceramiche S.p.A.

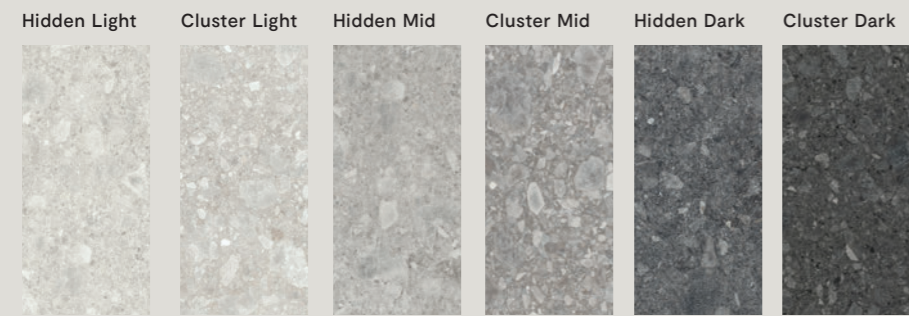
MILANO
Contract Lab - Milano
Via Brera 30, Milano
Tel +39 02 76011406
showroom_milano@leaceramiche.it

USA
Lea North America, LLC
800 Clanton Road, Suite N
Charlotte, NC 28217
T +1 704 522 6300
E info@leausa.us
www.leausa.us

Concept and art direction:
Group Marketing &
Communications -
Panariagroup

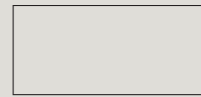
⑤ Slimtech Side Stone overview

Colori / Colors



Formati / Sizes ^{LR^T}

Fondi/Plain Tiles



120x278cm
48"x109^{1/2}"



EXPLORE IN 360°
ON REAL.LEACERAMICHE.COM



⑤ Gres porcellanato laminato
Laminated porcelain stoneware
Spessore/thickness: 6mm

Lea Ceramiche

⑥ Side Stone overview

Colori / Colors



Formati / Sizes ^{LR^T}

Fondi/Plain Tiles



120x120cm
48"x48"
Nat Hidden / Cluster
9mm



60x120cm
24"x48"
Nat, Grip Hidden / Cluster
9mm



60x60cm
24"x24"
Nat, Grip Hidden / Cluster
9mm



30x60cm
12"x24"
Nat Hidden / Cluster
9mm



Fondi/Plain Tiles
L2 ^{20mm}

60x120cm
24"x48"
Grip Cluster
No Protect

Mosaici e Formati Speciali / Mosaics and Special Sizes

Mosaico 36



30x30cm
12"x12"
Hidden / Cluster
9mm

Disponibile in tutti i colori
/ all colors available

Mosaico Micro



30x30cm
12"x12"
Mix Cluster
9mm

Mosaico Macro



30x30cm
12"x12"
Mix Cluster
9mm

Mosaico Mega



30x30cm
12"x12"
Mix Cluster
9mm

Gramma 72



49,8x14,5cm
19^{1/2}"x5^{3/4}"
Cluster
9mm



EXPLORE IN 360°
ON REAL.LEACERAMICHE.COM

⑥ Gres porcellanato
Porcelain stoneware
Spessore/thickness: 9mm

⑥ Gres porcellanato spessorato
Extra thick porcelain stoneware
Spessore/thickness: 20mm



PROTECT
SUPERFICIE ANTIBATTERICA
ANTIMICROBIAL SURFACE
with MICROBAN