

# REEF

APE BEST FOR YOU  
NEW COLLECTION



REEF CORTEN RECT 60X120 / RAW CEMENT SMOOTH RECT 60X120

Reef takes us back to the intense colours of the ocean through a wide range of shades and the use of six colour inks in digital printing. On a graphic level, it reproduces an exhaustive craftsmanship in a refractory cement that includes a thin metallic layer of bronze and iron. This handmade effect is reinforced by the micro-grain glaze and a full-field sparkling, which gives the pieces points of light that other types of glaze do not achieve. The honed finish, on the other hand, has required the application of a very advanced technique in porcelain tiles: an aspired 3D grit and a matt polished finish that gives the surface an extreme smoothness.

Reef nos remite a los intensos colores del océano a través de una amplia gama de tonalidades y el uso de seis tintas de color en la impresión digital. A nivel gráfico reproduce un trabajo artesanal exhaustivo en un cemento refractario que incluye una capa fina metálica de bronce y hierro. Ese efecto hecho a mano se refuerza a través del esmalte de microgranilla y un punteado brillante -sparkling- a campo lleno, que dota a las piezas de puntos de luz que no consiguen otros tipos de esmaltado. El acabado perfeccionado, por otra parte, ha requerido aplicar una técnica muy avanzada en porcelánico: una granilla 3D aspirada y un acabado pulido mate que aporta a la superficie una suavidad extrema.

# REEF

120X120 - 60X120 - 30X60 - 60X60 / 48"X48 - 24"X48" - 12"X24"- 24"X24"



 REEF WHITE HONED RECT  
120X120 / 48"X48" L96/M

 REEF WHITE RECT  
120X120 / 48"X48" L99/M



 REEF WHITE HONED RECT  
60X120 / 24"X48" L77/M

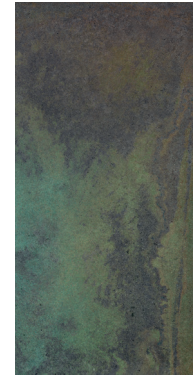
 REEF WHITE RECT  
60X120 / 24"X48" L95/M



 REEF WHITE RECT  
60X60 / 24"X24" J54/M

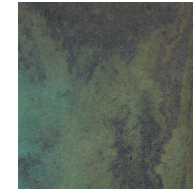


 REEF WHITE RECT  
30X60 / 12"X24" J54/M



 REEF AQUAMARINE HONED RECT  
60X120 / 24"X48" L77/M

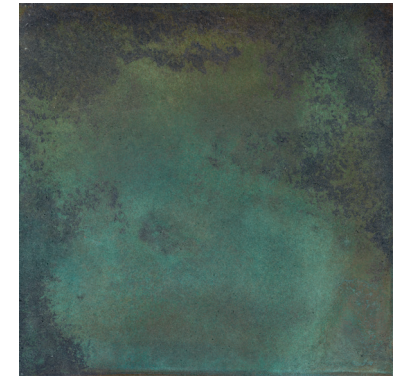
 REEF AQUAMARINE RECT  
60X120 / 24"X48" L95/M




 REEF AQUAMARINE RECT  
60X60 / 24"X24" J54/M



 REEF AQUAMARINE RECT  
30X60 / 12"X24" J54/M

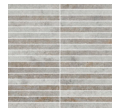


 REEF AQUAMARINE HONED RECT  
120X120 / 48"X48" L96/M

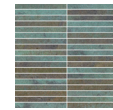
 REEF AQUAMARINE RECT  
120X120 / 48"X48" L99/M



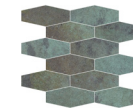
 MALLA REEF WHITE HONED  
36,3X30 / 14"X12 K59/P



 M-STICK REEF WHITE HONED  
30X30 / 12"X12" K30/P



 M-STICK REEF AQUAMARINE HONED  
30X30 / 12"X12" K30/P



 MALLA REEF AQUAMARINE HONED  
36,3X30 / 14"X12 K59/P



 REEF CORTEN HONED RECT  
120X120 / 48"X48" L96/M

 REEF CORTEN RECT  
120X120 / 48"X48" L99/M



 REEF CORTEN HONED RECT  
60X120 / 24"X48" L77/M

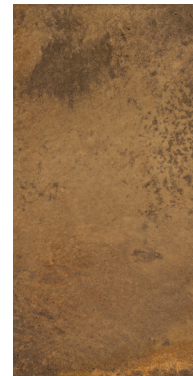
 REEF CORTEN RECT  
60X120 / 24"X48" L95/M



 REEF CORTEN RECT  
60X60 / 24"X24" J54/M

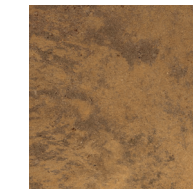


 REEF CORTEN RECT  
30X60 / 12"X24" J54/M



 REEF OCHER HONED RECT  
60X120 / 24"X48" L77/M

 REEF OCHER RECT  
60X120 / 24"X48" L95/M



 REEF OCHER RECT  
60X60 / 24"X24" J54/M



 REEF OCHER RECT  
30X60 / 12"X24" J54/M



 MALLA REEF CORTEN HONED  
36,3X30 / 14"X12 K59/P



 M-STICK REEF CORTEN HONED  
30X30 / 12"X12" K30/P



 M-STICK REEF OCHER HONED  
30X30 / 12"X12" K30/P



 MALLA REEF OCHER HONED  
36,3X30 / 14"X12 K59/P



WORK B COAL RECT 120X120 / REEF AQUAMARINE HONED RECT 60X120

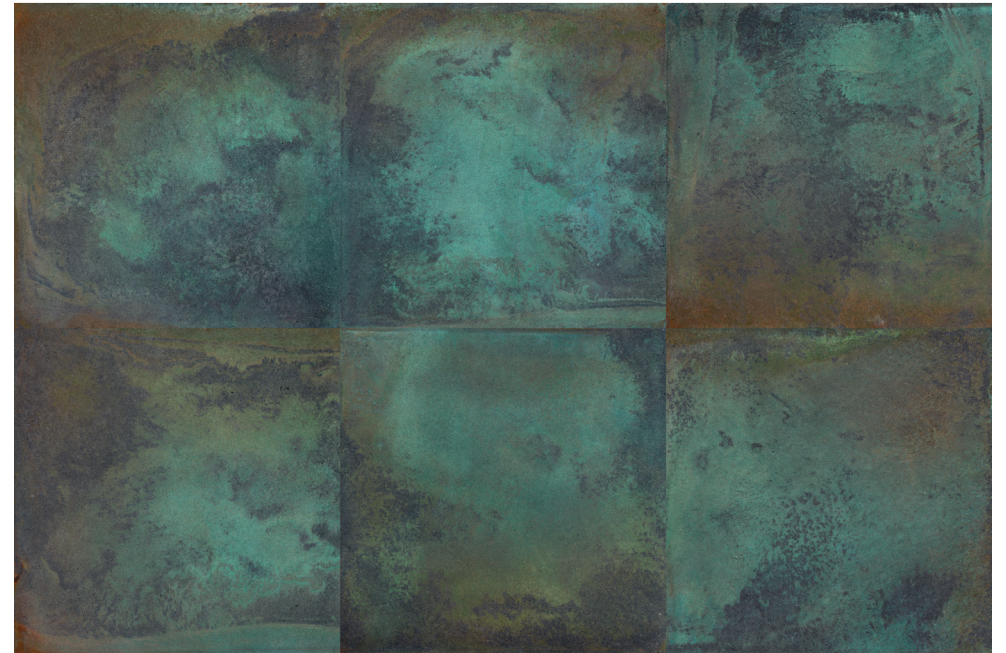
RAW CEMENT SMOOTH RECT 120X120 / REEF OCHER HONED RECT 60X120





REEF WHITE HONED RECT 120X120,REEF WHITE RECT 60X120

VARIACIÓN DE DISEÑO · GRAPHIC FACES · VARIATION GRAPHIQUE · FARBSTEMPEL



CARACTERÍSTICAS TÉCNICAS · TECHNICAL CHARACTERISTICS · CARACTÉRISTIQUES

**P** PORCELÁNICO/PORCELAIN TILES/GRÈS CERÁME



ANTIHIELO/FROST PROOF RÉSTANT AU GEL

**RU4** USO RECOMENDADO/RECOMMENED USE - RU4

**V4** VARIACION FUERTE/SUBSTANTIAL VARIATION

**RE** RECTIFICADO/RECTIFIED/RECTIFIÉ

**VF** VARIACIÓN DE DISEÑO/GRAPHIC FACES/TAMPONS DIFFÉRENTS:  
 120X120 - 6 PIEZAS/PIECES  
 60X120 - 12 PIEZAS/PIECES  
 60X60 - 24 PIEZAS/PIECES  
 30X60 - 48 PIEZAS/PIECES



Para más información técnica, especificaciones e imágenes visite nuestra web  
 El embalaje de los artículos está sujeto a variaciones, para obtener el dato exacto y actual se recomienda consultar la web.

For more technical information, specifications and images, visit our website  
 The packing of our items is subject to variations. To get the most accurate and updated information, we recommend to check the website.

Pour plus d'informations techniques, de spécifications et de visuels, visitez notre site web  
 L'emballage des articles est sujet à variation, pour obtenir les données exactes et actuelles il est recommandé de consulter notre site web.

T. +34 964 340 434  
 apeggrupo@apegrupo.com  
 apeggrupo.com